



INSTALLATION MANUAL
ROCK SLIDERS
PRODUCT NUMBER: G6850
APPLICATION: 2025 TOYOTA 4RUNNER



IMPORTANT SAFETY GUIDE | Your safety and the safety of others is very important.

In order to help you make informed decisions about safety, we have provided the following warnings, safety precautions, installation instructions, and other important information to alert you to potential hazards that could hurt you or others.

Please do a job safety analysis before each task to identify potential hazards for your situation and remove/protect against them. Use own good judgment and take your time.

Check packaged materials immediately upon arrival to ensure that all listed parts are included and undamaged.

Read and understand all warnings, safety precautions, and instructions before installing this product.

SENSORS FIELD OF VIEW MAY BE ALTERED WITH USE OF THE REPLACEMENT BUMPER.

WARNINGS

- Failure to observe the following warnings and instructions provided in this manual could lead to severe injury and/or death.
- For professional installation only. Careless installation and/or operation can result in serious injury, death, and/or equipment damage. All liability for installation and use rests with the user or consumer.
- Fab Fours, Inc. only approves installing this product according to these written instructions with the hardware provided. Failure to install according to these instructions will invalidate the warranty. This includes, but is not limited to, using alternative installation methods, hardware, or materials.
- This product is for off road use only.

SAFETY PRECAUTIONS

- Always remove jewelry and wear eye protection.
- Always use extreme caution when jacking up a vehicle for work. Set emergency brake and use tire blocks. Locate and use the vehicle manufacturers designated lifting points. Use jack stands.
- Always use appropriate and adequate care in lifting components into place.
- Always ensure components will remain secure during installation and operation.
- Always wear safety glasses when installing this kit. A drilling operation will cause flying metal chips. Flying chips can cause serious eye injury.
- Always use extreme caution when drilling a vehicle. Always disconnect power before welding. Thoroughly inspect the area to be drilled (on both sides of material when possible) prior to drilling, and relocate any objects that may be damaged.
- Always use extreme caution when welding a vehicle. Thoroughly inspect the area to be welded (on both sides of material when possible) prior to welding, and relocate any objects that may be a fire hazard. When welding in a cab, make sure the interior surfaces are covered (e.g., welding blanket) and a fire extinguisher is at hand.
- Always use extreme caution when cutting and trimming during fitting.
- Always tighten all nuts and bolts securely per installation instructions.
- Always route electrical cables carefully. Avoid moving parts, components that become hot, and rough or sharp edges.
- Always insulate and protect all exposed wiring and electrical terminals.
- Perform regular inspections and maintenance on mounts and hardware.



TABLE OF CONTENTS

2	SAFETY / DISCLAIMER
3	TABLE OF CONTENTS
4	A MESSAGE FROM THE OWNER
5	GETTING STARTED
6	PROVIDED MATERIAL
8	INSTALLATION
13	CONTACT

A MESSAGE FROM THE OWNER



Fab Fours' was born out of a passion for customizing vehicles and a love of the outdoors. Our engineering team uses the latest 3D design software to turn new product ideas into reality. In our factory, designs come to life with the combination of cutting edge technology for metal cutting and forming and an American workforce that puts its' heart and pride into every product.

From design and manufacturing, to quality and delivery, Fab Fours' mission is to be the market leader for steel truck and jeep accessories. We make sure a quality product is delivered on time, more than expected, better than expected to our customers.

Enjoy your new Fab Fours product. Welcome to the family!

Greg Higgs

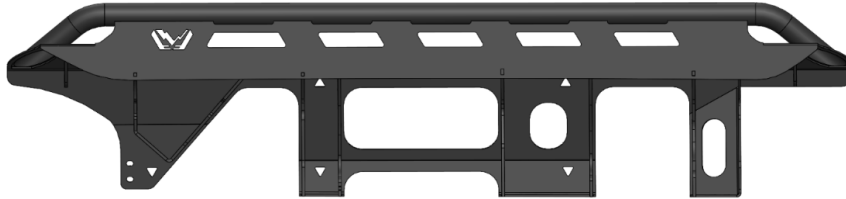
FOUNDER, FAB FOURS

GETTING STARTED

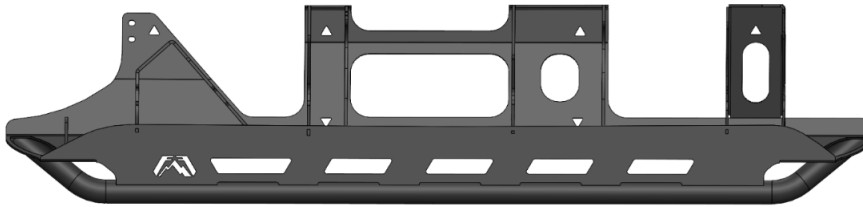
Before you begin the installation process of your new Fab Fours product, we suggest laying out all materials and parts on a pad or protective surface.

Failure to fully account for all components before beginning installation may leave vehicle immobile until part is acquired. Refer to the next pages as an inventory check.

PROVIDED MATERIALS



23460 – PASSENGER SIDE SLIDER



23461 – DRIVER SIDE SLIDER



23469-01 – FRONT
NUT PLATES
QTY:4

23469-02 – MID/DS
REAR NUT PLATES
QTY:6

23469-03 – PS REAR
NUT PLATES
QTY:2

REQUIRED TOOLS

- 12MM SOCKET
- 17 SOCKET
- 9/16" SOCKET

ASSISTANCE

We recommend two people perform the installation as items are heavy and may need to be held in place while installing.

ORGANIZATION

Disassemble the vehicle where you can catalog and store everything. We suggest labeling and bagging all the OEM bolts when removing from the vehicle. Failure to keep track of parts could lead to an inability to properly reinstall components.

HARDWARE KIT | 50524-HW

IDENTIFICATION NUMBER	COMPONENT DESCRIPTION	QTY
50524-HW	M10-1.25 X 30MM ZINC HEX CAP SCREW	4
50524-HW	M10 ZINC FLAT WASHER	4
50524-HW	3/8"-16 X 1.25" YELLOW ZINC HEX CAP SCREW	12
50524-HW	3/8" YELLOW ZINC FLAT WASHER	12
50524-HW	242 BLUE LOCTITE	1

DISASSEMBLY & INSTALLATION

1. If your 4Runner is equipped with OE steps, start by removing the 6x M8 bolts from the body and remove the steps from the truck.
2. Once you have unpacked the Fab Fours Sliders, start by disassembling and organizing your nut plates. See Figure 1 for nut plate break down and assembly locations. Figure 1.

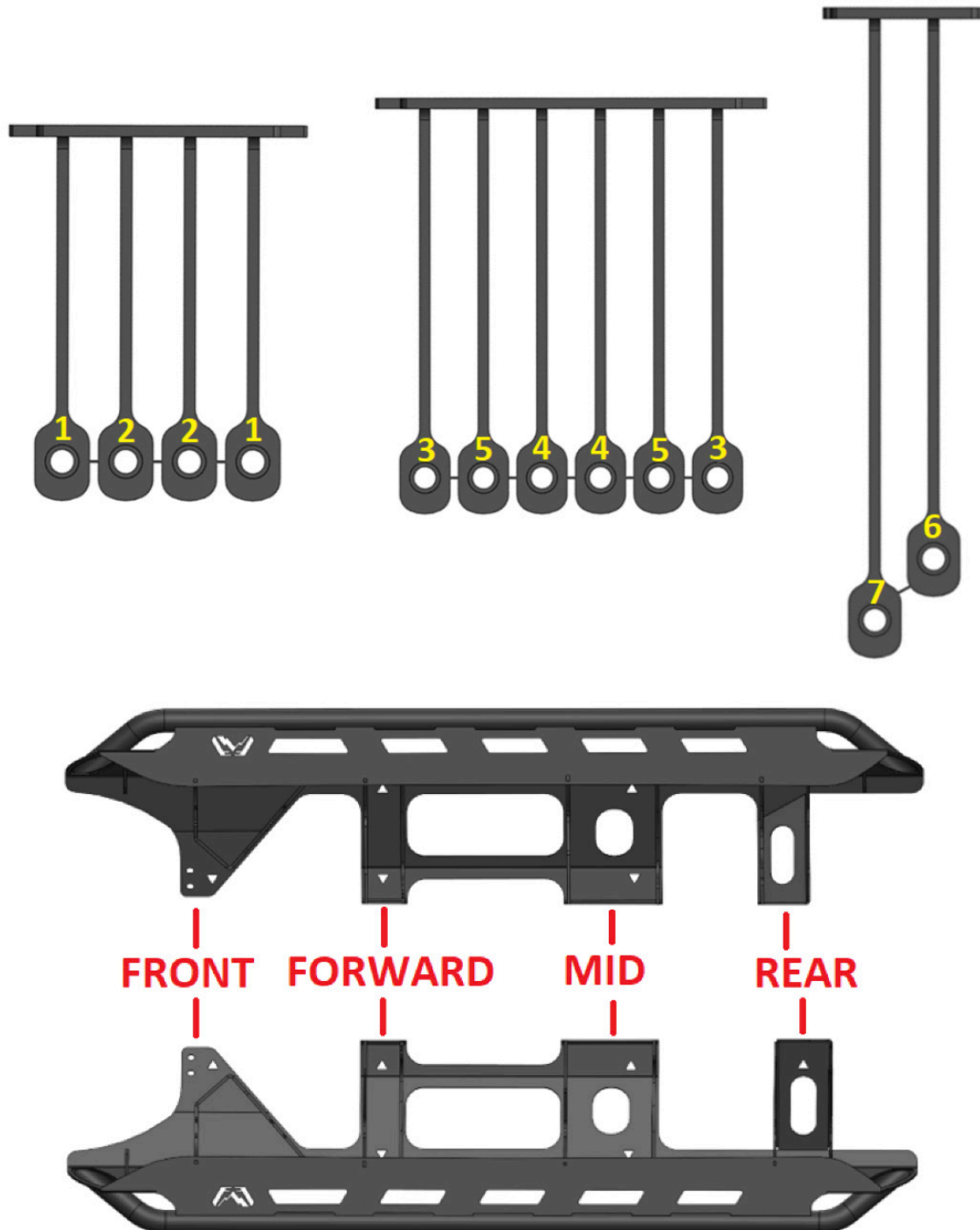


Figure 1

3. Disassemble the nut plates by placing a wrench on the break off tab and wiggle the tab unit it breaks while holding the nut plates against a table. Once tab is removed, twist the nut plates until the small tab holding them at the base breaks. Figure 2.

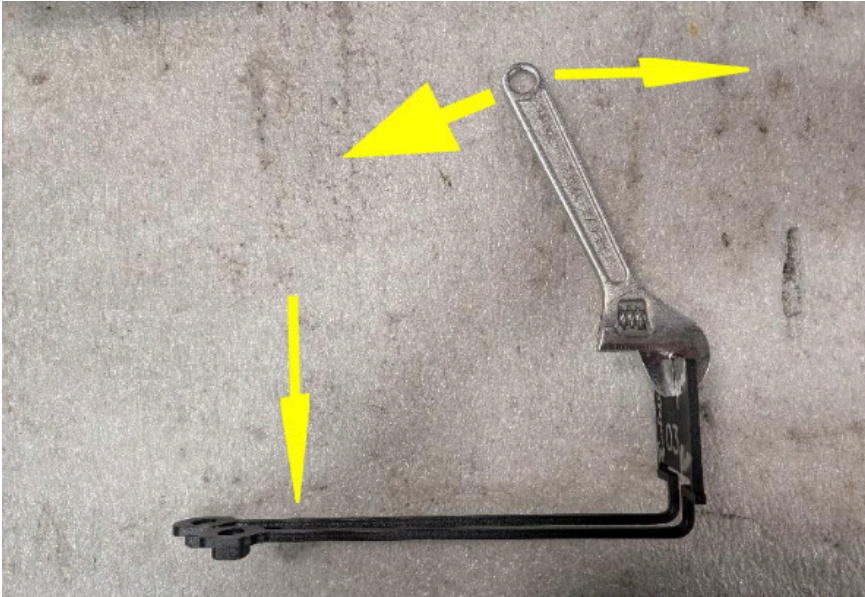


Figure 2

4. Remove ALL the plastic frame caps along the DS and PS frames. Figure 3.

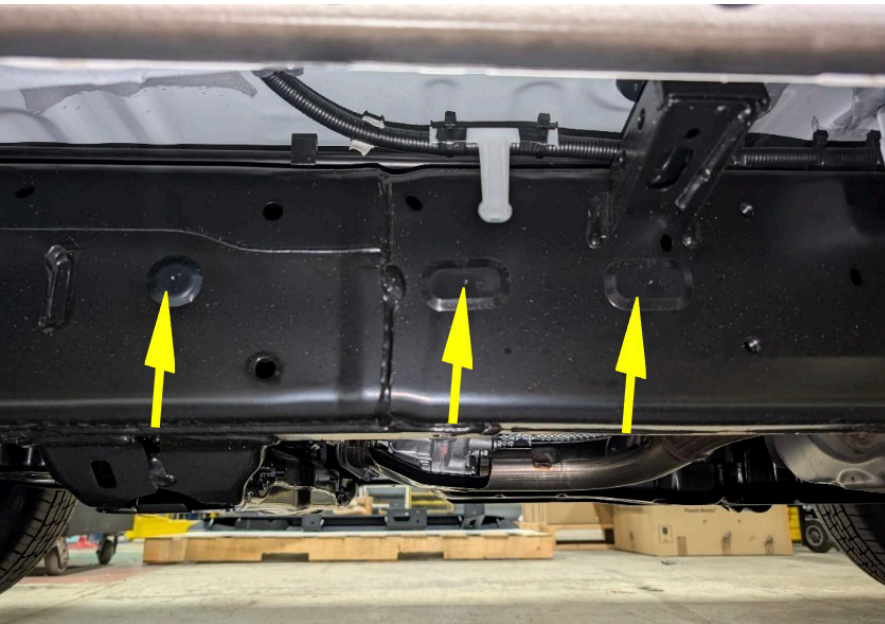


Figure 3

-
5. With assistance, hold the driver side slider up to the truck and install the FRONT M10 zinc hex head cap screws with flat washers into the body mount frame using a 17mm socket. Place a dab of 242 Loctite on the end of each bolt. Figure 4.

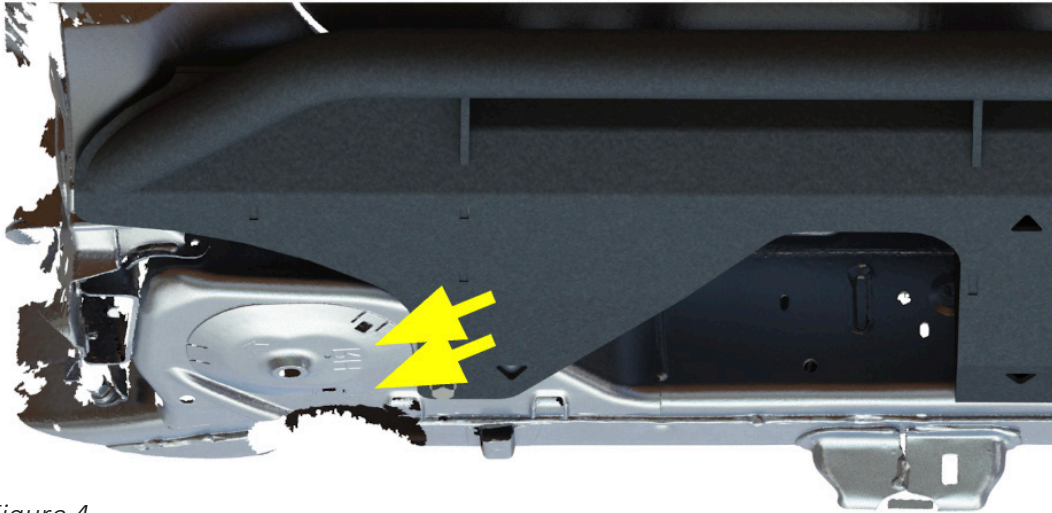


Figure 4

6. Next move to the FORWARD mount on the driver side. Use the #1 etched nut plates through the frame along with 2x 3/8" yellow zinc hex head cap screws with washers to fasten it in place. Place a dab of 242 Loctite on the end of each bolt. Figure 5.

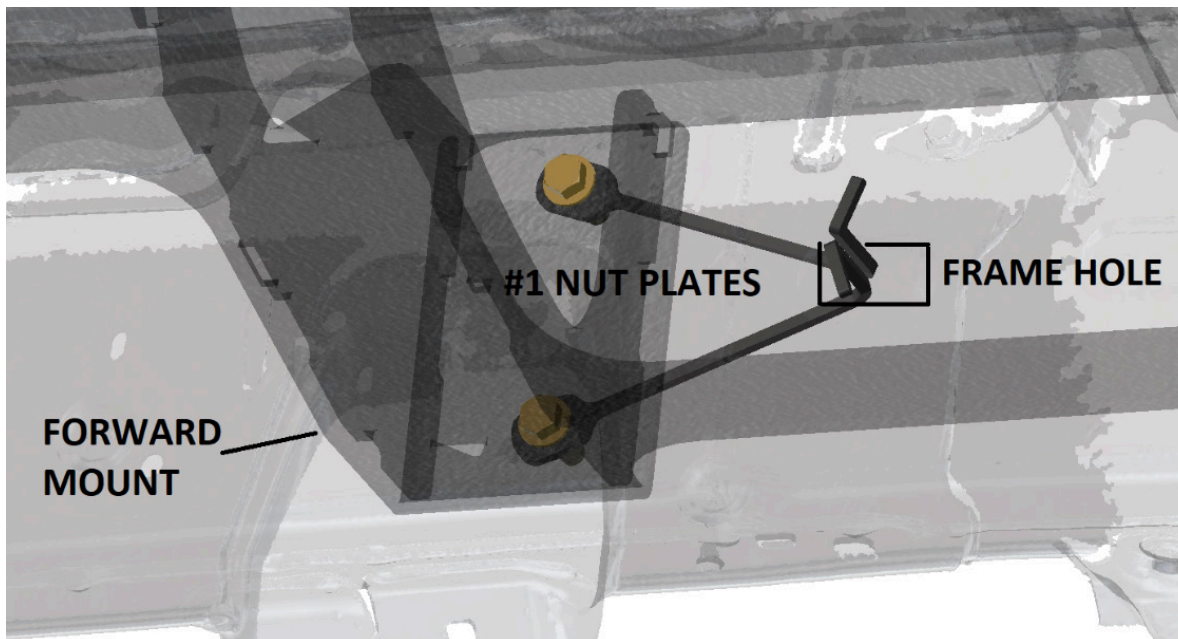


Figure 5

7. Next move to the MID mount on the driver side. Use the #4 etched nut plates through the frame along with 2x 3/8" yellow zinc hex head cap screws with washers to fasten it in place. Place a dab of 242 Loctite on the end of each bolt. Figure 6.

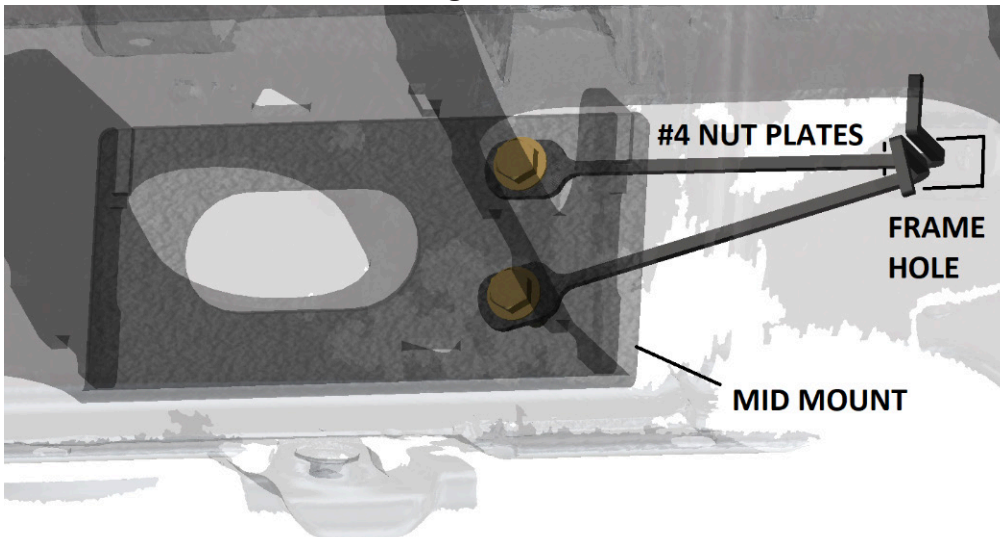


Figure 6

8. Lastly, move to the REAR mount on the driver side. Use the #3 etched nut plates through the frame hole in the rear body mount along with 2x 3/8" yellow zinc hex head cap screws with washers to fasten it in place. Place a dab of 242 Loctite on the end of each bolt. Figure 7.

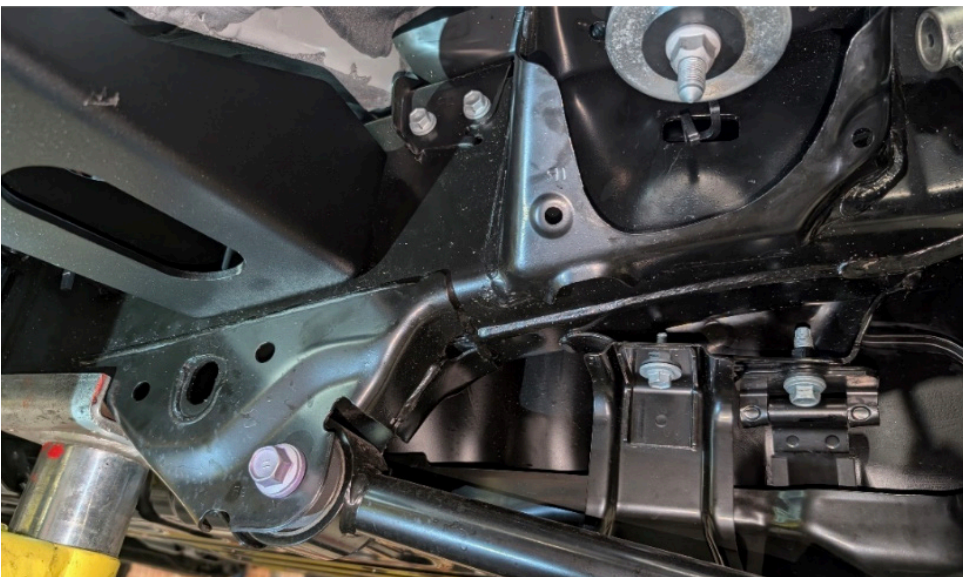


Figure 7

-
9. Repeat steps 5-8 to install the passenger side slider with the following changes:
- a. For the passenger side FORWARD mount use #2 etched nut plates.
 - b. For the passenger side MID mount use #5 etched nut plates.
 - c. For the passenger side REAR mount use the #6 etched nut plate for the top mounting bolt and the #7 nut plate for the bottom mounting bolt. Figure 8.

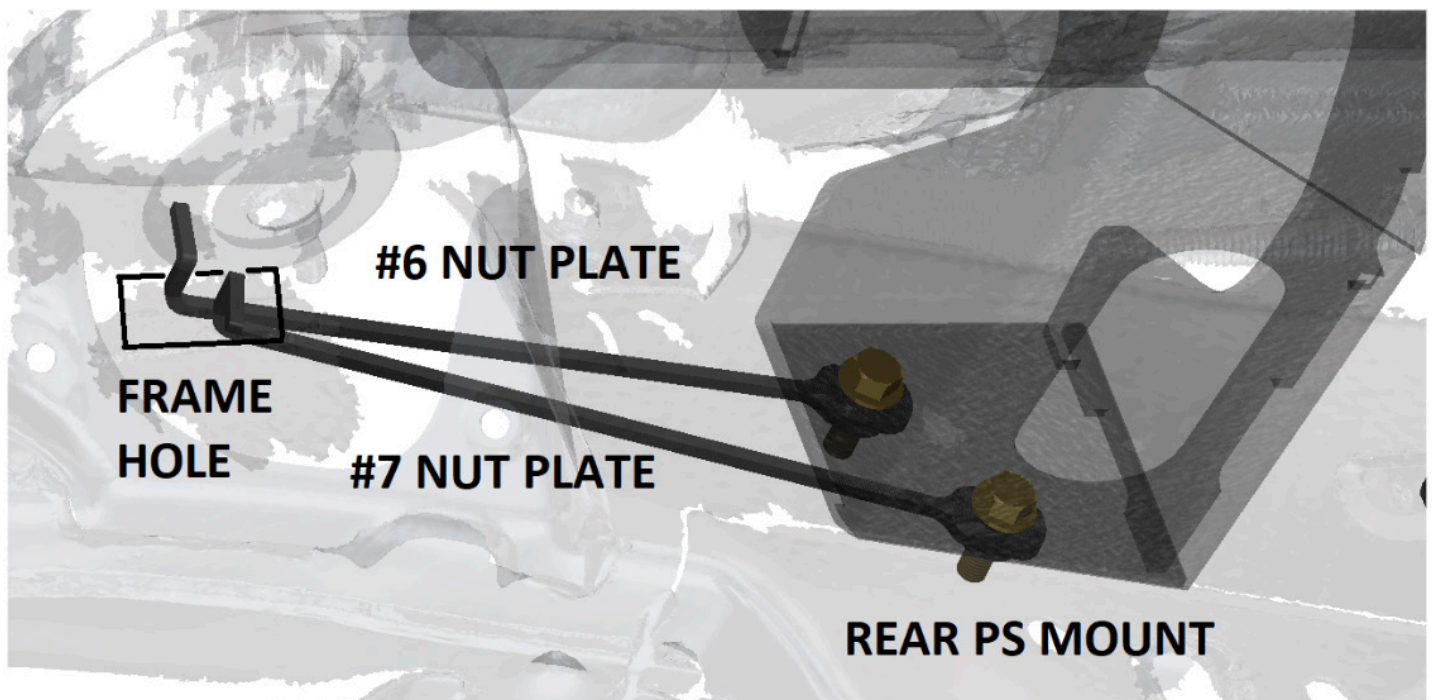


Figure 8

10. Fully tighten all mounting hardware and enjoy the fit, finish, and functionality of your new Fab Fours Sliders!

CONTACT INFORMATION

**FAB FOURS INC.
2213 INDUSTRIAL PARK ROAD
LANCASTER, SC 29720**

**PHONE: (866) 385-1905
FAX: 970-385-1914
EMAIL: SUPPORT@FABFOURS.COM
FABFOURS.COM**



**“IF YOU’RE LOOKING FOR MORE OF THE SAME,
THEN YOU’VE COME TO THE WRONG PLACE.”**

- GREG HIGGS

