



INSTALLATION MANUAL
SEMI-HIDDEN WINCH MOUNT
PRODUCT NUMBER: N6851
APPLICATION: 2025 TOYOTA 4RUNNER



IMPORTANT SAFETY GUIDE | Your safety and the safety of others is very important.

In order to help you make informed decisions about safety, we have provided the following warnings, safety precautions, installation instructions, and other important information to alert you to potential hazards that could hurt you or others.

Please do a job safety analysis before each task to identify potential hazards for your situation and remove/protect against them. Use own good judgment and take your time.

Check packaged materials immediately upon arrival to ensure that all listed parts are included and undamaged.

Read and understand all warnings, safety precautions, and instructions before installing this product.

SENSORS FIELD OF VIEW MAY BE ALTERED WITH USE OF THE REPLACEMENT BUMPER.

WARNINGS

- Failure to observe the following warnings and instructions provided in this manual could lead to severe injury and/or death.
- For professional installation only. Careless installation and/or operation can result in serious injury, death, and/or equipment damage. All liability for installation and use rests with the user or consumer.
- Fab Fours, Inc. only approves installing this product according to these written instructions with the hardware provided. Failure to install according to these instructions will invalidate the warranty. This includes, but is not limited to, using alternative installation methods, hardware, or materials.
- This product is for off road use only.

SAFETY PRECAUTIONS

- Always remove jewelry and wear eye protection.
- Always use extreme caution when jacking up a vehicle for work. Set emergency brake and use tire blocks. Locate and use the vehicle manufacturers designated lifting points. Use jack stands.
- Always use appropriate and adequate care in lifting components into place.
- Always ensure components will remain secure during installation and operation.
- Always wear safety glasses when installing this kit. A drilling operation will cause flying metal chips. Flying chips can cause serious eye injury.
- Always use extreme caution when drilling a vehicle. Always disconnect power before welding. Thoroughly inspect the area to be drilled (on both sides of material when possible) prior to drilling, and relocate any objects that may be damaged.
- Always use extreme caution when welding a vehicle. Thoroughly inspect the area to be welded (on both sides of material when possible) prior to welding, and relocate any objects that may be a fire hazard. When welding in a cab, make sure the interior surfaces are covered (e.g., welding blanket) and a fire extinguisher is at hand.
- Always use extreme caution when cutting and trimming during fitting.
- Always tighten all nuts and bolts securely per installation instructions.
- Always route electrical cables carefully. Avoid moving parts, components that become hot, and rough or sharp edges.
- Always insulate and protect all exposed wiring and electrical terminals.
- Perform regular inspections and maintenance on mounts and hardware.



TABLE OF CONTENTS

2	SAFETY / DISCLAIMER
3	TABLE OF CONTENTS
4	A MESSAGE FROM THE OWNER
5	GETTING STARTED
6	PROVIDED MATERIAL
8	INSTALLATION
25	CONTACT

A MESSAGE FROM THE OWNER



Fab Fours' was born out of a passion for customizing vehicles and a love of the outdoors. Our engineering team uses the latest 3D design software to turn new product ideas into reality. In our factory, designs come to life with the combination of cutting edge technology for metal cutting and forming and an American workforce that puts its' heart and pride into every product.

From design and manufacturing, to quality and delivery, Fab Fours' mission is to be the market leader for steel truck and jeep accessories. We make sure a quality product is delivered on time, more than expected, better than expected to our customers.

Enjoy your new Fab Fours product. Welcome to the family!

Greg Higgs

FOUNDER, FAB FOURS

GETTING STARTED

Before you begin the installation process of your new Fab Fours product, we suggest laying out all materials and parts on a pad or protective surface.

Failure to fully account for all components before beginning installation may leave vehicle immobile until part is acquired. Refer to the next pages as an inventory check.

PROVIDED MATERIALS



23459 – BUMPER SHELL



21871-10 – LIGHT BAR L-BRACKETS QTY:2

REQUIRED TOOLS

- BODY PRY TOOL
- PHILLIPS HEAD SCREWDRIVER
- 12MM SOCKET WRENCH
- 13MM SOCKET WRENCH
- 17MM SOCKET WRENCH
- 10MM SOCKET WRENCH
- 5/8" COMBINATION AND SOCKET WRENCH
- 11/16 COMBINATION AND SOCKET WRENCH
- PERMANENT MARKER
- SMALL RECIPROCATING SAW
- MASKING TAPE (OPTIONAL)

ASSISTANCE

We recommend two people perform the installation as items are heavy and may need to be held in place while installing.

ORGANIZATION

Disassemble the vehicle where you can catalog and store everything. We suggest labeling and bagging all the OEM bolts when removing from the vehicle. Failure to keep track of parts could lead to an inability to properly reinstall components.

HARDWARE KIT | 50523-HW

IDENTIFICATION NUMBER	COMPONENT DESCRIPTION	QTY
50523-HW	1/4"-20 X 1", HEX HEAD CAP SCREW, YELLOW-ZINC, GRADE 8	2
50523-HW	1/4"-20, HEX NUT, YELLOW-ZINC, GRADE 8	2
50523-HW	1/4"-SAE, FLAT WASHER, YELLOW-ZINC, GRADE 8	4
50523-HW	1/4"-SAE, LOCK WASHER, YELLOW-ZINC, GRADE 8	2
50523-HW	7/16"-14 X 1.25", HEX HEAD CAP SCREW, YELLOW-ZINC, GRADE 8	4
50523-HW	7/16", USS, FLAT WASHER, YELLOW-ZINC, GRADE 8	8
50523-HW	7/16"-SAE, LOCK WASHER, YELLOW-ZINC, GRADE 8	4
50523-HW	7/16"-14, HEX NUT, YELLOW-ZINC, GRADE 8	4
50523-HW	M8-1.25 X 30MM, YELLOW ZINC, CLASS 10.9, HEX FLANGE BOLT	2
50523-HW	M8, SPACER, STAINLESS STEEL	2

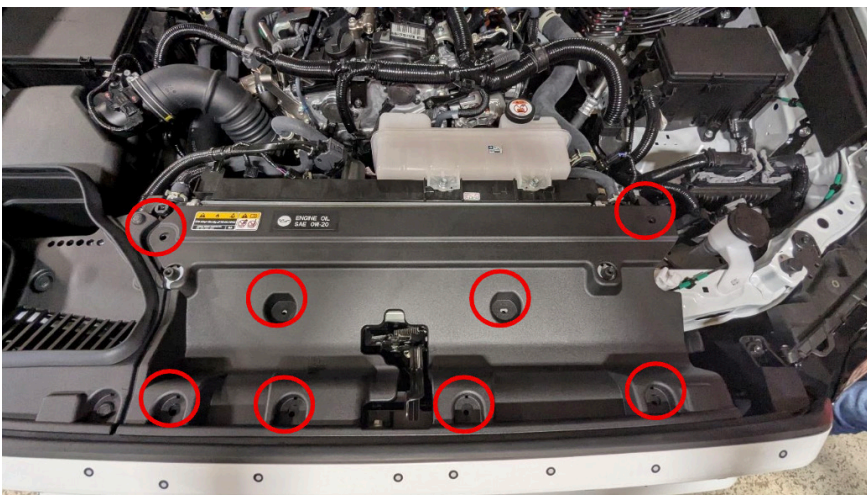
DISASSEMBLY & INSTALLATION

1. Disconnect the vehicles battery located in the trunk of the vehicle. (Figure 1)



Figure 1

2. Using the panel pry tool remove the eight (8) push pins in the under-hood cowl. To release the pins, depress the center. (Figure 2-5)



Figures 2-5

3. Using the panel pry tool remove the four (4) push pins in the intake scoop. (Figure 6)

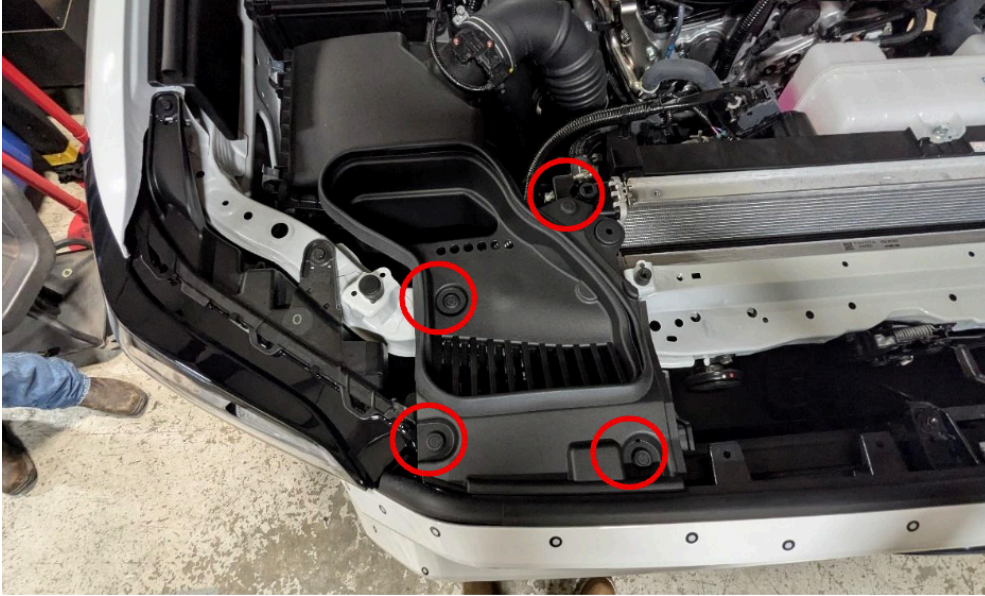


Figure 6

4. Using the panel pry tool and phillips head screwdriver, remove the six (6) push pins and four (4) screws in the front part of the DS inner fender liner. Repeat on the passenger's side. (Figures 7-9)

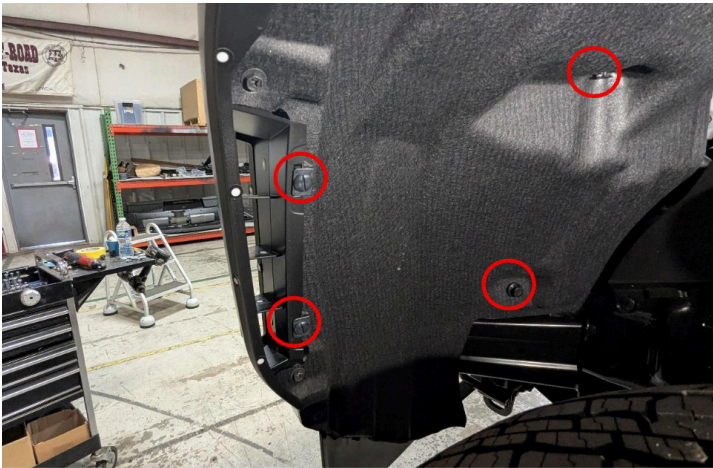


Figure 7

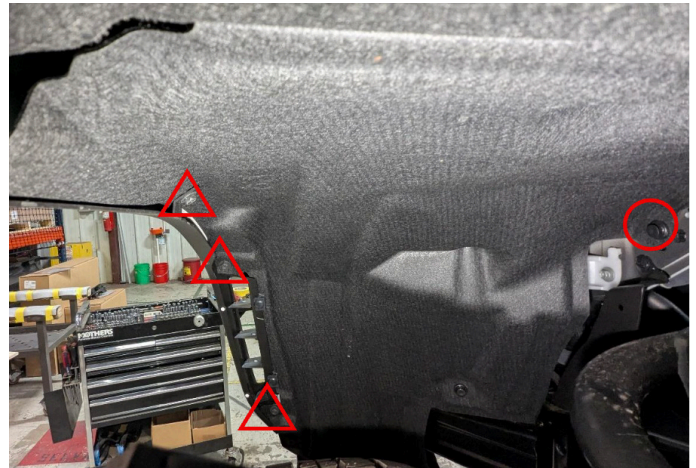


Figure 8



Figure 9

5. Using a 10mm socket wrench, remove the five (5) remaining screws from the air dam. (Figure 10)

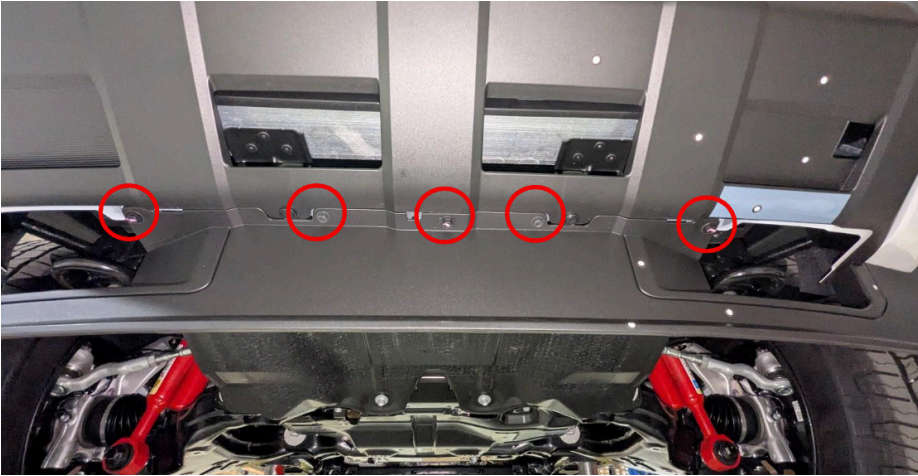


Figure 10

6. Using the panel pry tool, release the three (3) tabs on the lower portion of the flare inside the fender and pull the flare away from the vehicle to release the rest of the clips along the top of the flare. Repeat on the passenger's side. (Figure 11-13)

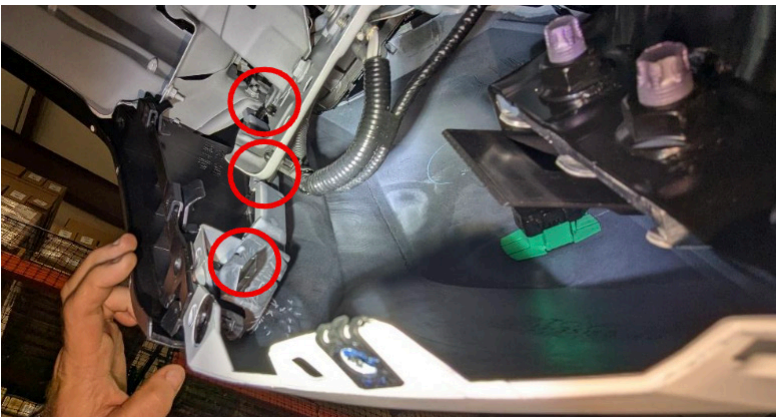


Figure 11

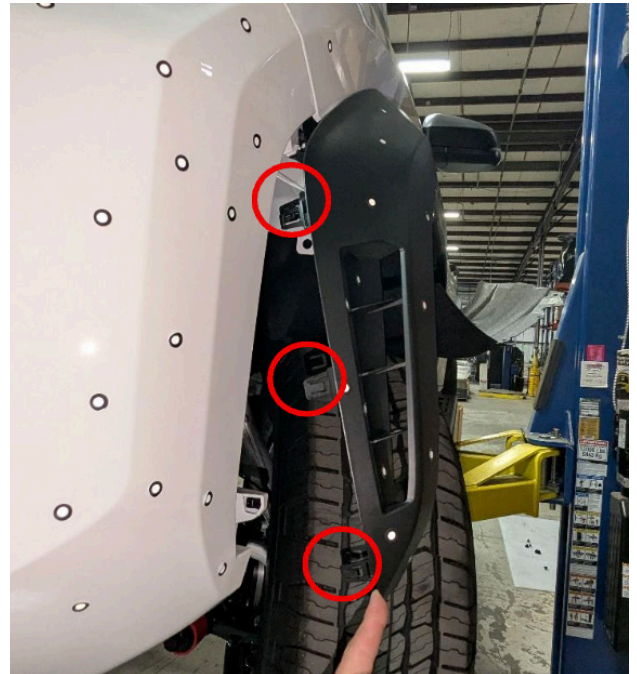


Figure 12



Figure 13

7. Using a 10mm socket wrench, remove the screw that was exposed by removing the flare. (Figure 14)



Figure 14

8. Using a 10mm socket wrench, remove the four (4) screws from the bottom of the fascia. Set these aside for reassembly later. (Figure 15)

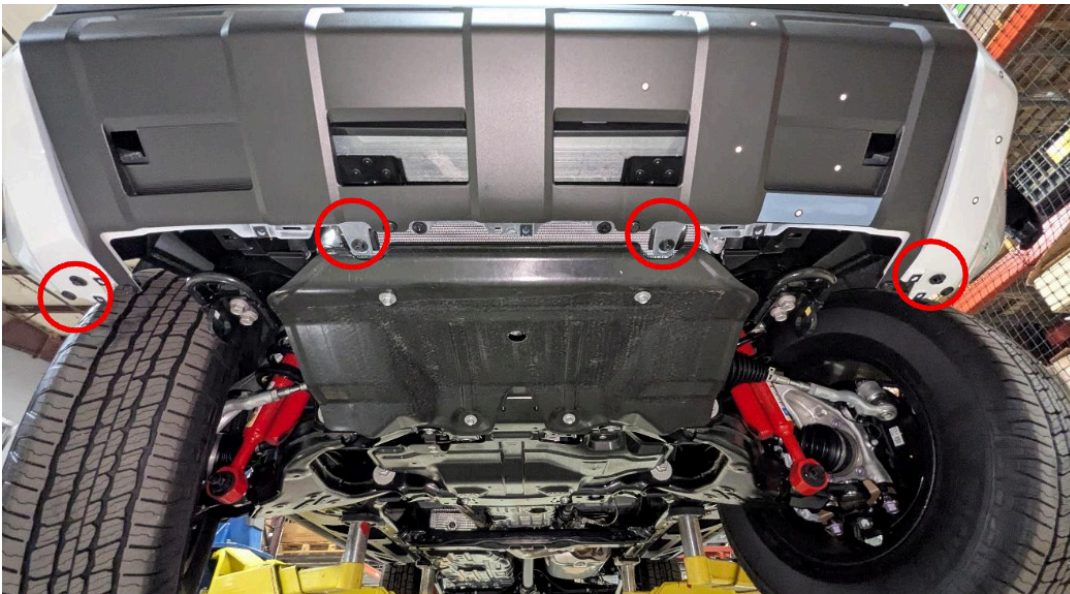


Figure 15

-
9. Using a 10mm socket wrench, remove the three (3) screws from the top of the grille. (Figure 16)

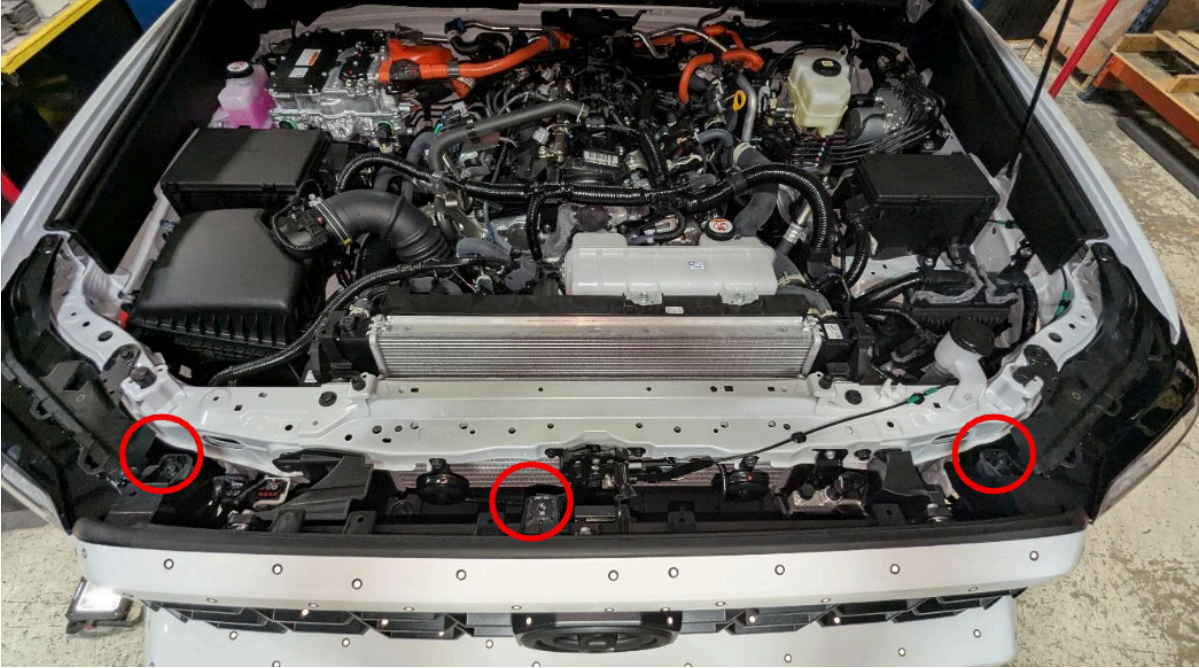


Figure 16

10. Disconnect the wiring harnesses on the passenger's side of the vehicle. (Figure 17)

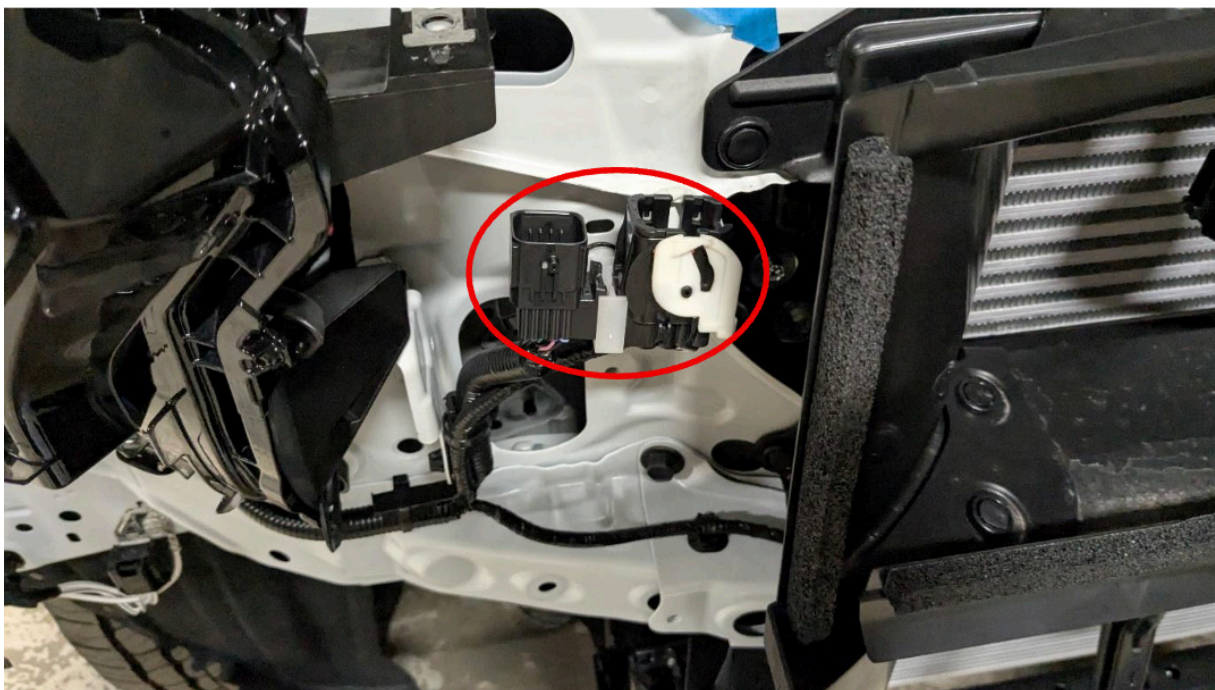


Figure 17

11. Pull the corners of the fascia outward away from the vehicle in order to release the clips along the fender. The fascia can now be removed from the vehicle by pulling outward along the rest of the fascia. (Figure 18)

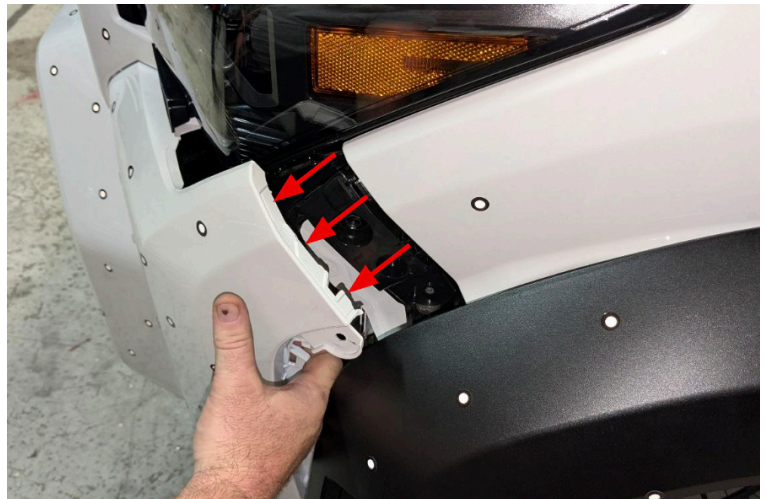


Figure 18

12. Using a 17mm socket wrench, remove the eight (8) screws from the crash bar. Set these aside for reassembly later. (Figure 19-20)



Figure 19

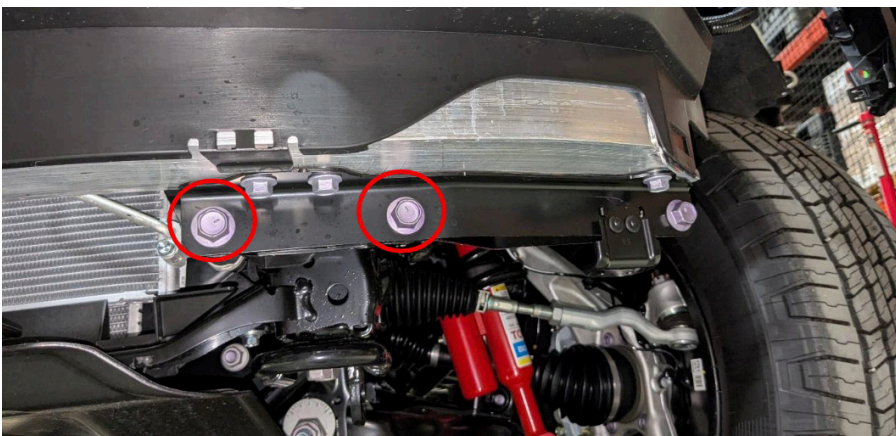


Figure 20

-
13. Using a 17mm socket wrench, remove the two (2) screws from each tow hook. (Figure 21)



Figure 21

14. Using a 12mm socket wrench, remove the four (4) screws from the skid plate. (Figure 22)



Figure 22

15. Using a panel pry tool, remove the two (2) push pins from the plastic frame covers inside of each frame rail to remove them from the vehicle. (Figure 23)

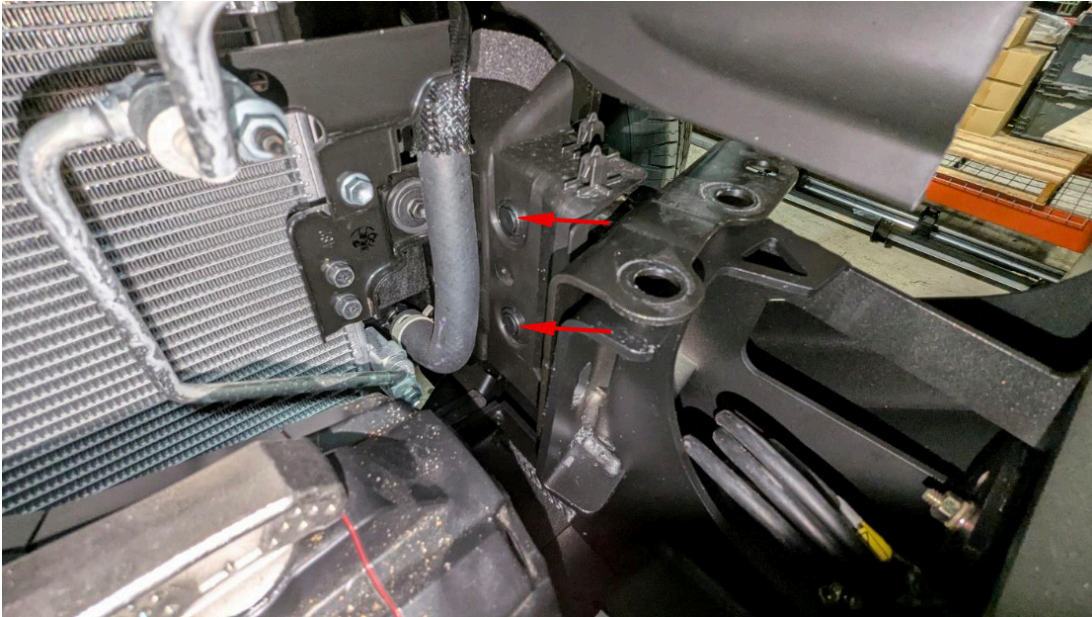


Figure 23

16. Using a panel pry tool, remove the four (4) push pins from the bottom of the fascia. (Figure 24)

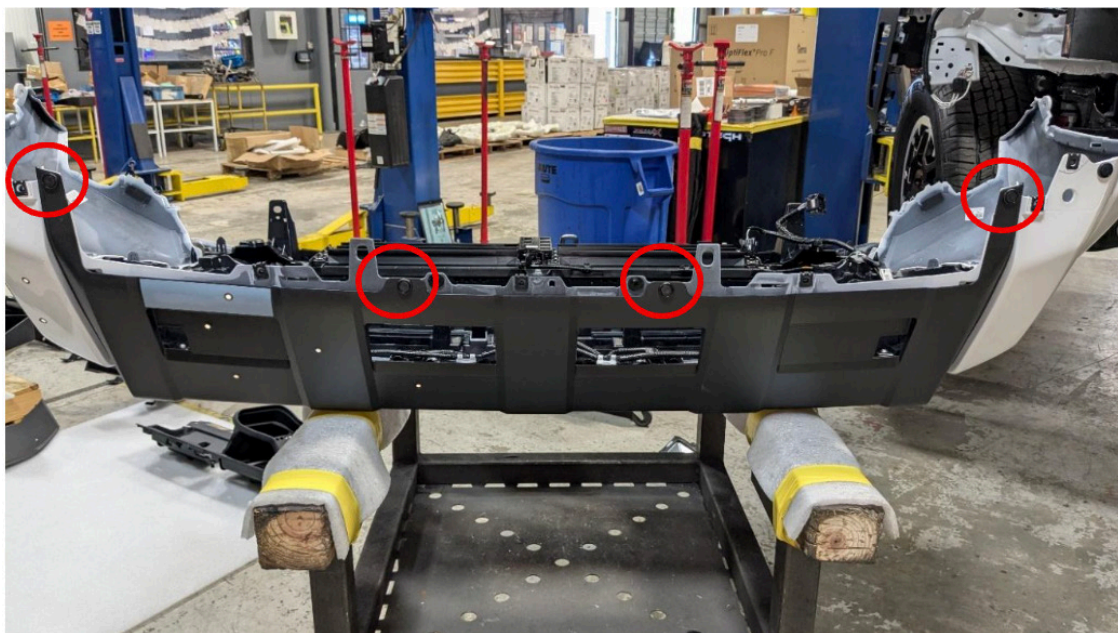


Figure 24

17. Pinch the locking tabs on the center two (2) parking sensor covers to remove them. Set them aside for reassembly later. (Figure 25)

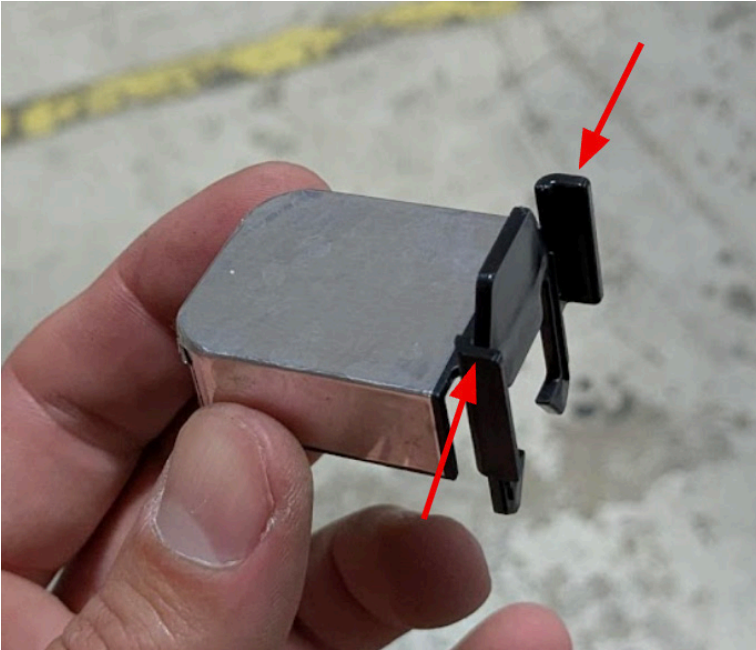


Figure 25

18. Carefully spread the green locking tabs on the parking sensor housings to remove the sensors from their housings. (Figure 26)

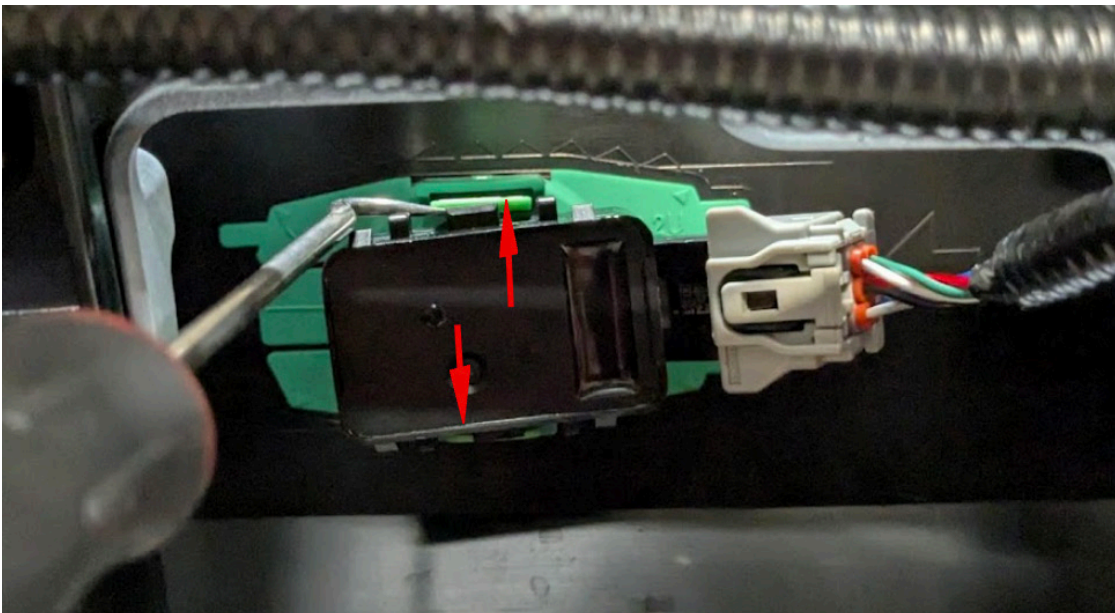


Figure 26

19. Using a panel pry tool, release the wiring harness retainers and move the harness up and out of the way as far as possible. (Figure 27)

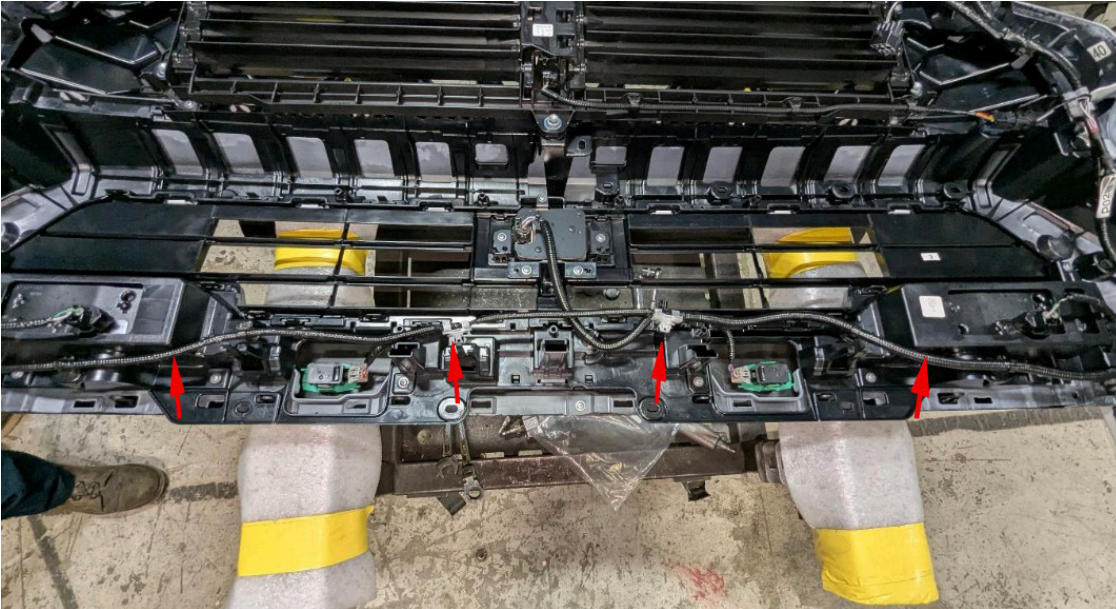


Figure 27

20. Using a Phillips-head screwdriver, remove the eight (8) screws across the inside of the fascia. (Figure 28)

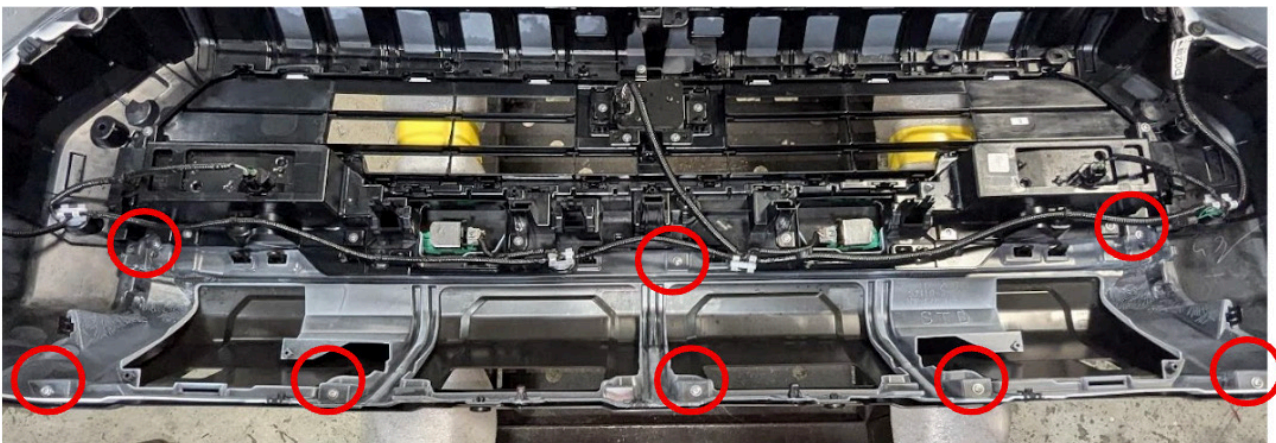


Figure 28

-
21. Using a panel pry tool, release the remaining clips attaching the lower black fascia cover and sensor fascia from the painted portion of the fascia. (Figure 29-31)

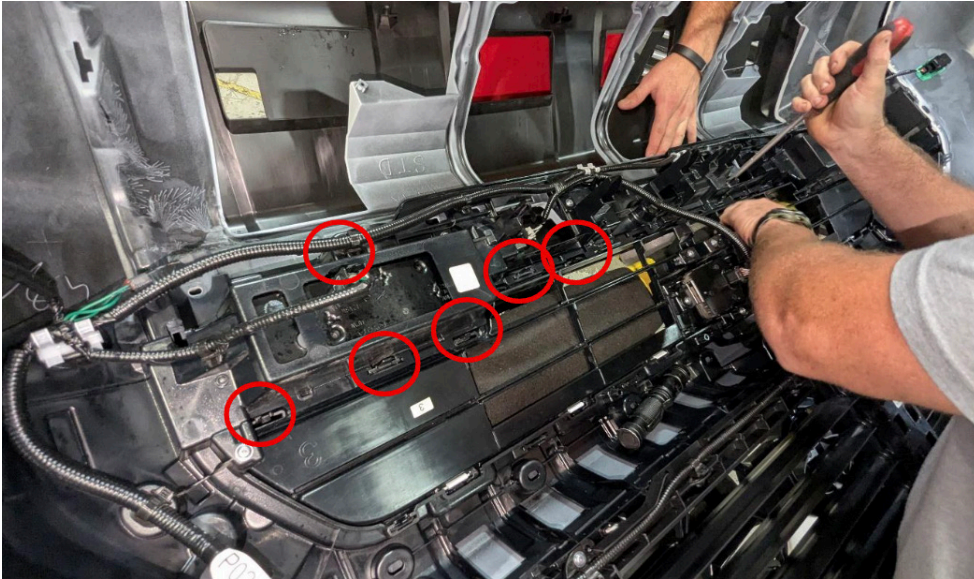


Figure 29

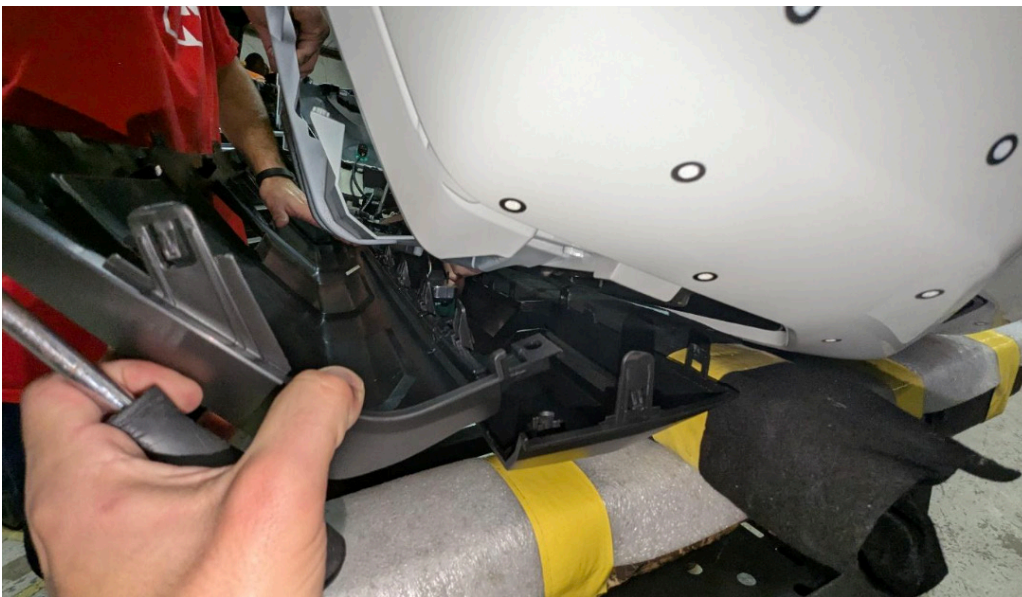


Figure 30



Figure 31

21. Using a Phillips head screwdriver, reinstall three (3) of the previously removed screws to resecure the facia. (Figure 32)

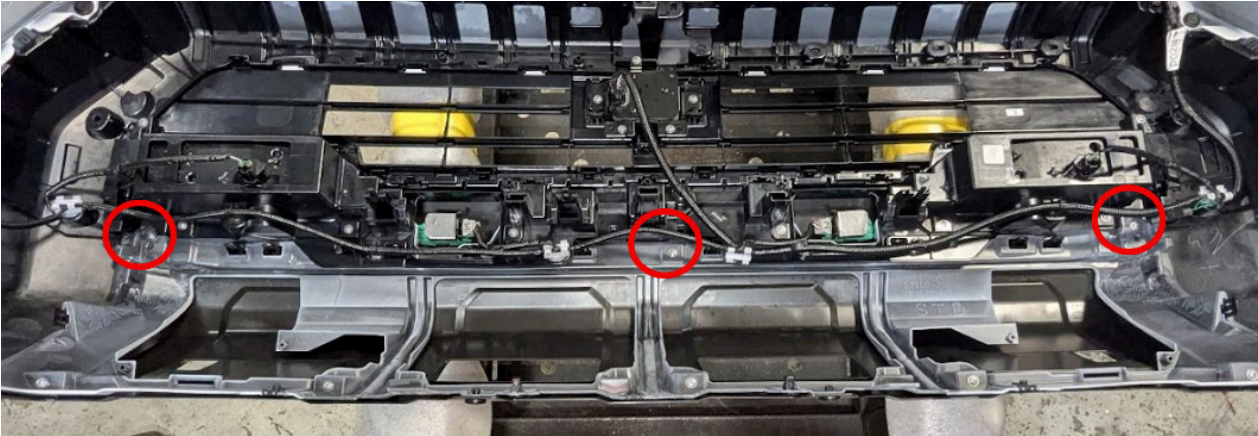


Figure 32

23. Using a marker, make a line on the painted portion of the facia which will mark the cut region. Masking tape can be applied to the surrounding painted areas to protect them during cutting but this is optional. (Figure 33-34)



Figure 33



Figure 34

24. Using a small reciprocating saw, cut along the previously marked line taking care to be aware of the wiring harness and making sure to cut through all layers that intersect the cut line. (Figure 35)



Figure 35

25. If installing a lightbar in the winch mount, do so now using the two (2) provided mounting brackets (part#: 21871-10) and 1/4" hex head caps screws, flat washers, lock washers and nuts. Tighten the previously installed hardware using a 7/16" socket and combination wrench. (Figure 36-37)



Figure 36

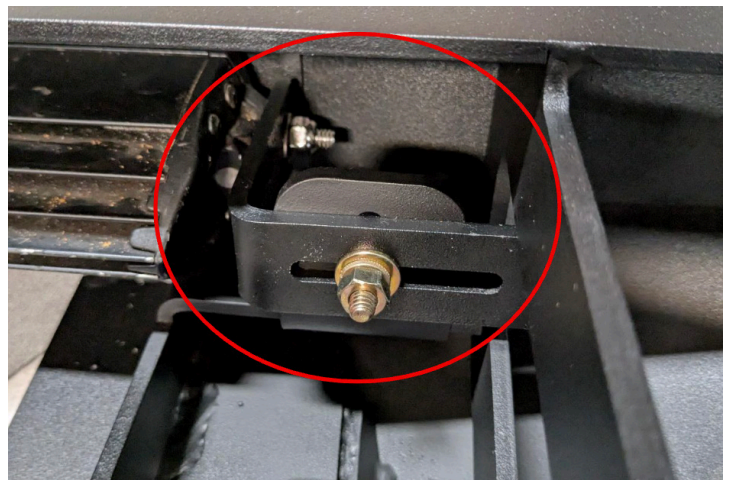


Figure 37

26. If installing a winch and fairlead, do so now using the manufactures provided hardware and instructions. (Figure 38)



Figure 38

27. With assistance, hold the assembled winch mount (part#: 23459) into place on the vehicle frame. (Figure 39)

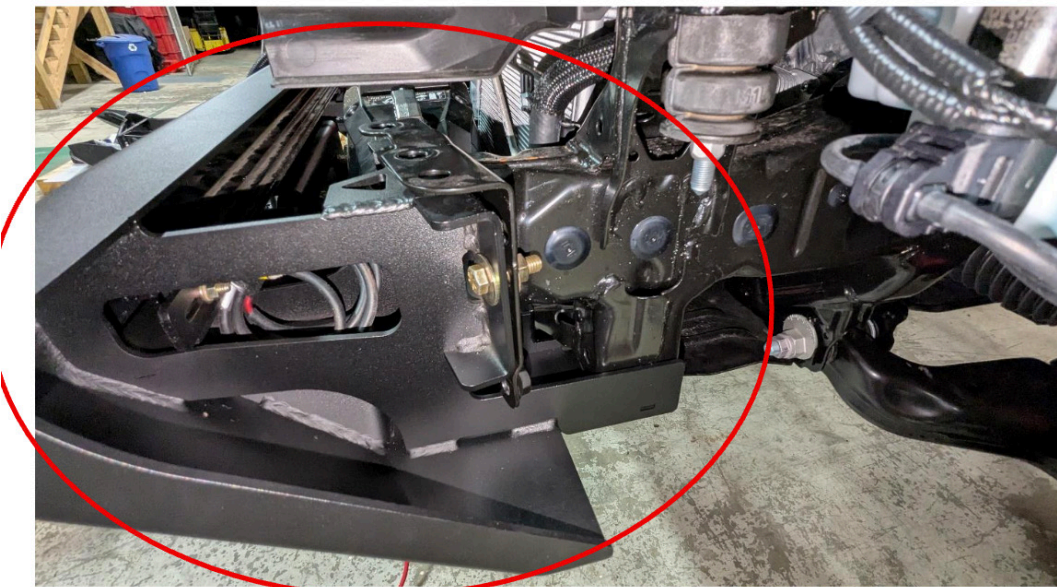


Figure 39

28. Install the four (4) provided 7/16" hex head cap screws, eight (8) flat washers, four (4) lock washers and nuts into each frame horn. (Figure 40-41)

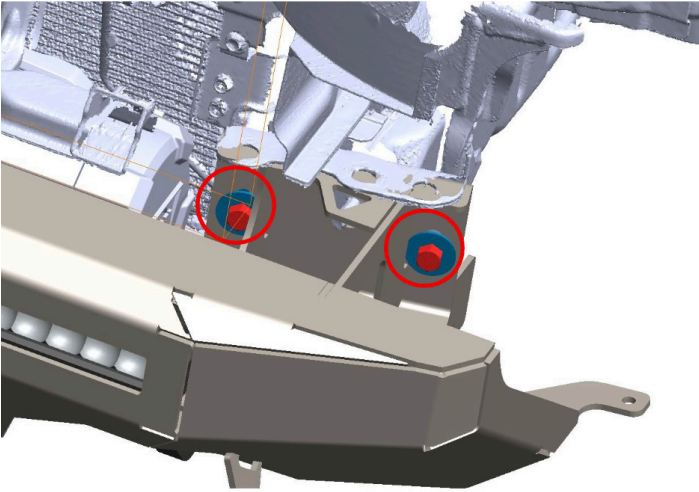


Figure 40

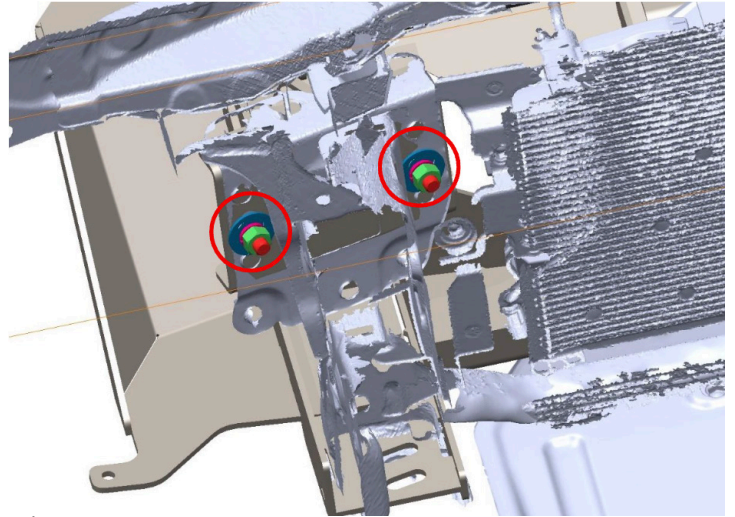


Figure 41

29. Reinstall four (4) of the bolts previously removed from the crash bar earlier into the two (2) holes that the tow hooks were removed from. (Figure 42)

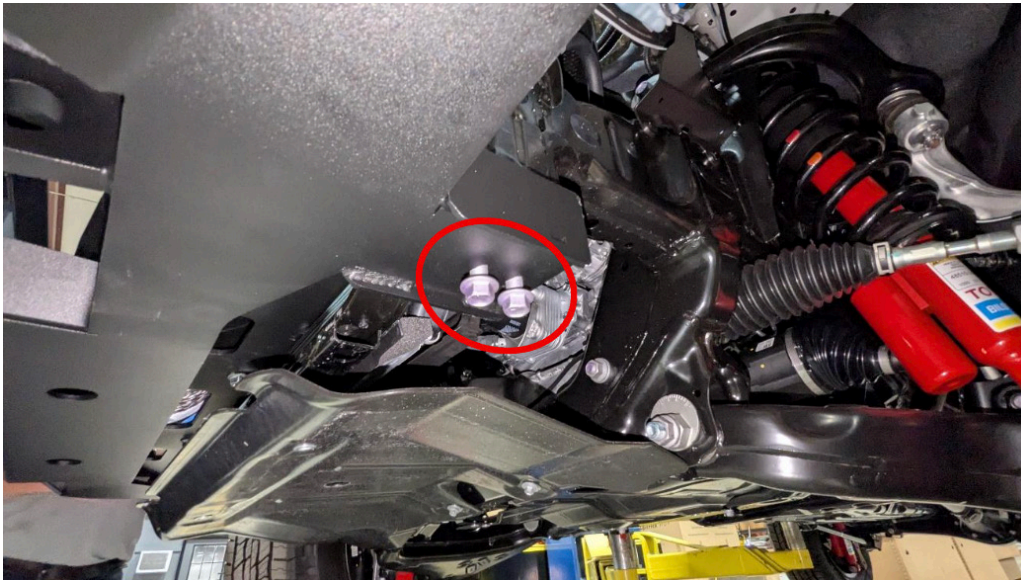


Figure 42

30. Loosely set the fascia back into place on the vehicle and check the placement of the winch mount. Adjust as desired then remove the fascia. (Figure 43)

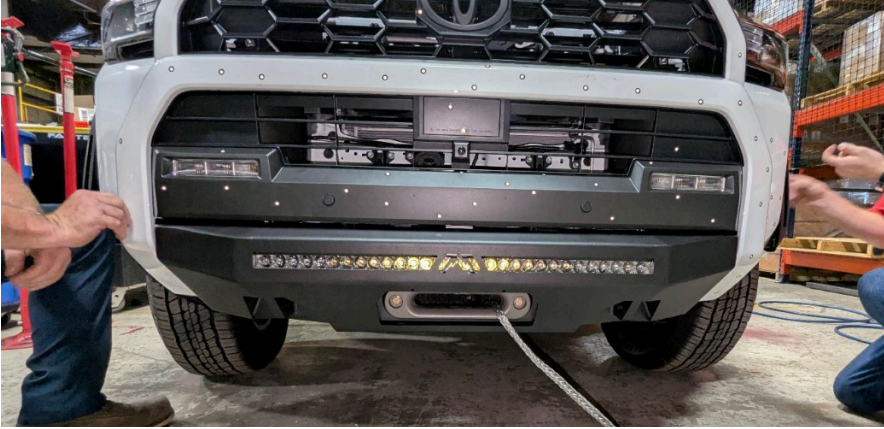


Figure 43

31. Using a 17mm socket wrench, tighten the previously installed factory hardware in the bottom of the frame where the tow hooks were removed.
32. Using a 5/8" socket wrench and 11/16" combination wrench, tighten the previously installed 7/16" hardware in the frame horns.
33. Reinstall the sensors back into their housings in the fascia. Reattach the wiring harness to the fascia where possible.
34. Reassemble the fascia, flares, inner fender liners, under hood cowl and ducting using the steps and hardware used to remove them.
35. Reconnect the wiring harness behind the grille.
36. Attach the bottom of the fascia to the winch mount reusing the factory screws removed earlier (Figure 44-45)



Figure 44



Figure 45

37. Reinstall the skid plate using the factory hardware at the rear two holes. Install the two (2) provided M8 spacers above the skid plate at the front two holes then install the two (2) provided M8 screws in the front holes. Tighten using a 12mm socket wrench for the factory hardware and a 13mm socket wrench for the provided M8 hardware. (Figure 46-47)

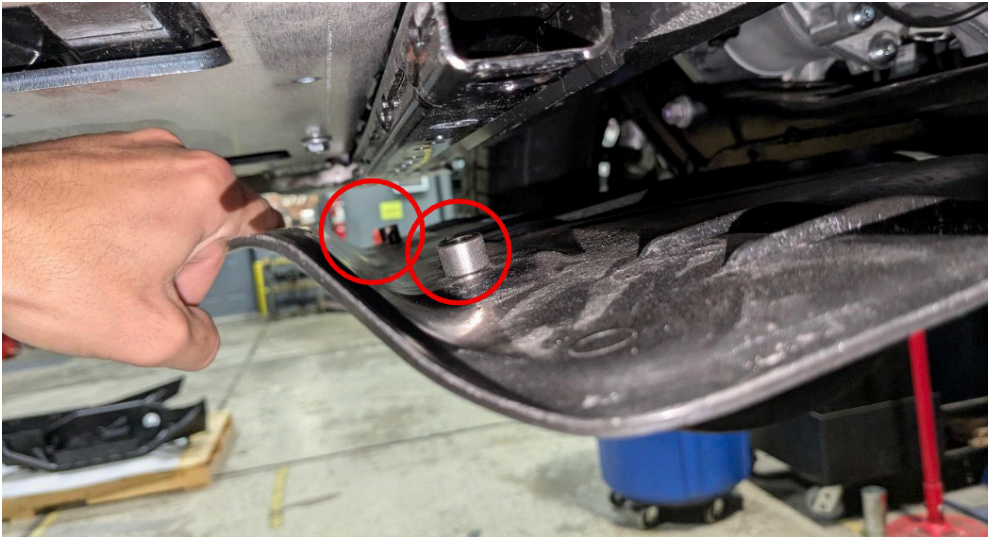


Figure 46



Figure 47

38. Reconnect the vehicles battery.

INSTALLATION COMPLETE

CONTACT INFORMATION

**FAB FOURS INC.
2213 INDUSTRIAL PARK ROAD
LANCASTER, SC 29720**

**PHONE: (866) 385-1905
FAX: 970-385-1914
EMAIL: SUPPORT@FABFOURS.COM
FABFOURS.COM**



**“IF YOU’RE LOOKING FOR MORE OF THE SAME,
THEN YOU’VE COME TO THE WRONG PLACE.”**

- GREG HIGGS

