



INSTALLATION MANUAL
BLACK STEEL ELITE FRONT BUMPER
PRODUCT NUMBER: Q6360
APPLICATION: 2024 FORD E-450



IMPORTANT SAFETY GUIDE | Your safety and the safety of others is very important.

In order to help you make informed decisions about safety, we have provided the following warnings, safety precautions, installation instructions, and other important information to alert you to potential hazards that could hurt you or others.

Please do a job safety analysis before each task to identify potential hazards for your situation and remove/protect against them. Use own good judgment and take your time.

Check packaged materials immediately upon arrival to ensure that all listed parts are included and undamaged.

Read and understand all warnings, safety precautions, and instructions before installing this product.

SENSORS FIELD OF VIEW MAY BE ALTERED WITH USE OF THE REPLACEMENT BUMPER.

WARNINGS

- In order to help you make informed decisions about safety, we have provided installation instructions and other information.
- These instructions alert you to potential hazards that could hurt you or others.
- Please do a job safety analysis (JSA) before each task to identify potential hazards for your situation and remove/protect against them.
- You must use your own good judgment and take your time.

SAFETY PRECAUTIONS

- Always remove jewelry and wear eye protection.
- Always use extreme caution when jacking up a vehicle for work. Set emergency brake and use tire blocks. Locate and use the vehicle manufacturers designated lifting points. Use jack stands.
- Always use appropriate and adequate care in lifting components into place.
- Always ensure components will remain secure during installation and operation.
- Always wear safety glasses when installing this kit. A drilling operation will cause flying metal chips. Flying chips can cause serious eye injury.
- Always use extreme caution when drilling a vehicle. Always disconnect power before welding. Thoroughly inspect the area to be drilled (on both sides of material when possible) prior to drilling, and relocate any objects that may be damaged.
- Always use extreme caution when welding a vehicle. Thoroughly inspect the area to be welded (on both sides of material when possible) prior to welding, and relocate any objects that may be a fire hazard. When welding in a cab, make sure the interior surfaces are covered (e.g., welding blanket) and a fire extinguisher is at hand.
- Always use extreme caution when cutting and trimming during fitting.
- Always tighten all nuts and bolts securely per installation instructions.
- Always route electrical cables carefully. Avoid moving parts, components that become hot, and rough or sharp edges.
- Always insulate and protect all exposed wiring and electrical terminals.
- Perform regular inspections and maintenance on mounts and hardware.

TABLE OF CONTENTS

2	SAFETY / DISCLAIMER
3	TABLE OF CONTENTS
4	A MESSAGE FROM THE OWNER
5	GETTING STARTED
6	PROVIDED MATERIAL
8	INSTALLATION
15	CONTACT

A MESSAGE FROM THE OWNER



Fab Fours' was born out of a passion for customizing vehicles and a love of the outdoors. Our engineering team uses the latest 3D design software to turn new product ideas into reality. In our factory, designs come to life with the combination of cutting edge technology for metal cutting and forming and an American workforce that puts its' heart and pride into every product.

From design and manufacturing, to quality and delivery, Fab Fours' mission is to be the market leader for steel truck and jeep accessories. We make sure a quality product is delivered on time, more than expected, better than expected to our customers.

Enjoy your new Fab Fours product. Welcome to the family!

Greg Higgs

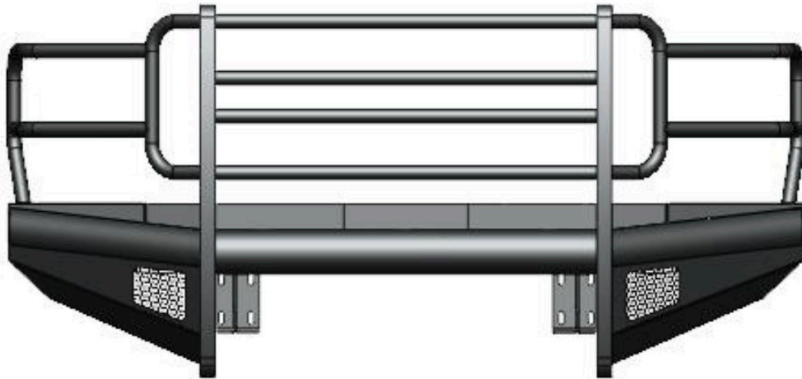
FOUNDER, FAB FOURS

GETTING STARTED

Before you begin the installation process of your new Fab Fours product, we suggest laying out all materials and parts on a pad or protective surface.

Failure to fully account for all components before beginning installation may leave vehicle immobile until part is acquired. Refer to the next pages as an inventory check.

PROVIDED MATERIALS



23453 - BUMPER



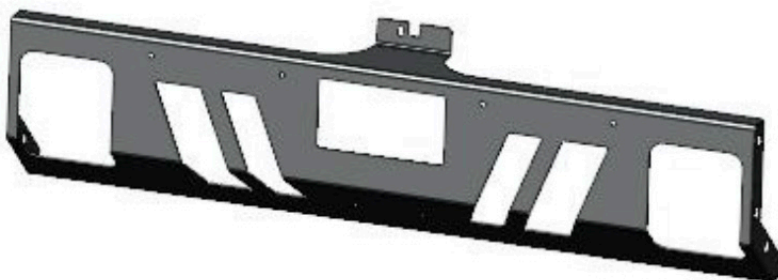
23454



23455



61366 QTY:2



23458

REQUIRED TOOLS

- 3/4" SOCKET WRENCH
- 3/4" COMBINATION WRENCH
- 7/16" SOCKET WRENCH
- 7/16" COMBINATION WRENCH
- 8MM SOCKET WRENCH
- 18MM SOCKET WRENCH
- PANEL PRY TOOL
- MASKING TAPE

ASSISTANCE

We recommend two people perform the installation as items are heavy and may need to be held in place while installing.

ORGANIZATION

Disassemble the vehicle where you can catalog and store everything. We suggest labeling and bagging all the OEM bolts when removing from the vehicle. Failure to keep track of parts could lead to an inability to properly reinstall components.

HARDWARE KIT | 50517-HW + 20260-HW

IDENTIFICATION NUMBER	COMPONENT DESCRIPTION	QTY
50517-HW	1/2"-13 X 1.5", HEX HEAD CAP SCREW, YELLOW-ZINC, GRADE 8	16
50517-HW	1/2"-13, HEX NUT, YELLOW-ZINC, GRADE 8	16
50517-HW	1/2", LOCK WASHER, YELLOW-ZINC, GRADE 8	16
50517-HW	1/2", FLAT WASHER, YELLOW-ZINC, GRADE 8	32
50517-HW	1/4"-20 X 1", YELLOW-ZINC, GRADE 8, HEX HEAD CAP SCREW	3
50517-HW	1/4"-20, YELLOW-ZINC, GRADE 8, HEX NUT	3
50517-HW	1/4", YELLOW-ZINC, GRADE 8, FLAT WASHER	6
50517-HW	1/4", YELLOW-ZINC, GRADE 8, LOCK WASHER	3
20260-HW	1/2" X 1", HEX HEAD CAP SCREW, YELLOW-ZINC, GRADE 8	6
20260-HW	1/2" X 2.25", HEX HEAD BOLT, YELLOW-ZINC, GRADE 8	4
20260-HW	1/2", LOCK WASHER, YELLOW ZINC, GRADE 8	16
20260-HW	1/2", HEX NUT, YELLOW ZINC, GRADE 8	10
20260-HW	1/2", FLAT WASHER, YELLOW ZINC, GRADE 8	20

DISASSEMBLY & INSTALLATION

Note: Save all OEM parts until installation is complete!

1. Using masking tape, cover the bottom 3" of the grille, headlights and fenders to prevent damaging the surfaces.
2. Using a panel pry tool, remove the wire loom clip attaching the block heater to the bumper. Figure 1



Figure 1

3. Disconnect the sensor wiring harness from the vehicle. Figure 2

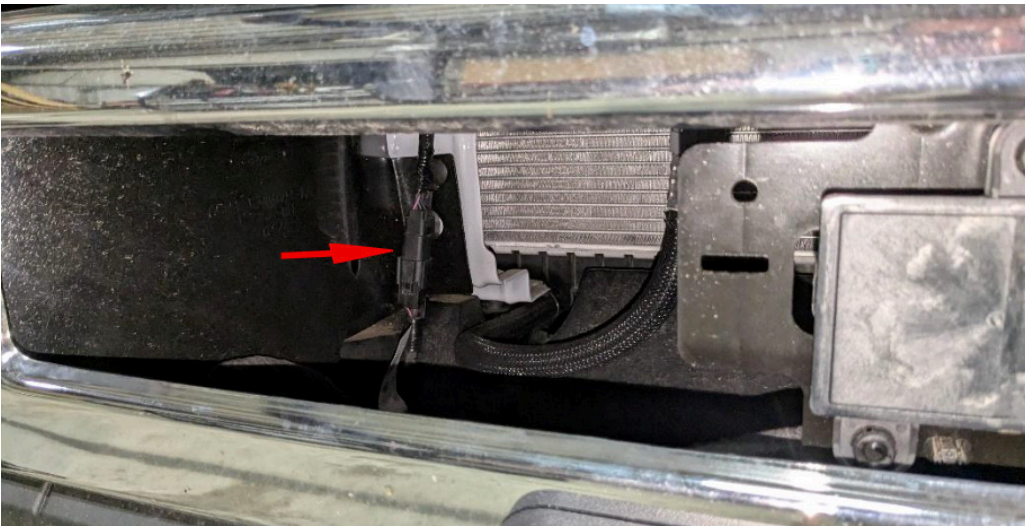


Figure 2

4. Using an 8mm socket wrench, remove the four (4) screws in the skid plate to remove it from the vehicle. Figure 3-4



Figure 3

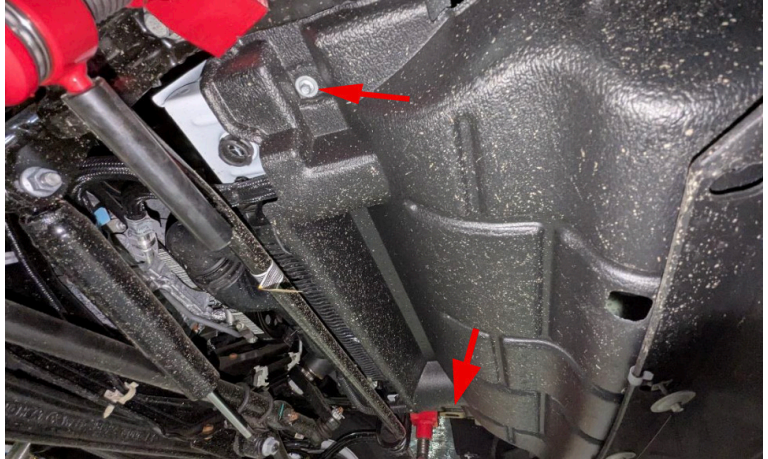


Figure 4

5. Using a panel pry tool, remove the two (2) push pins from each air deflector on each frame rail inside the bumper. Figure 5-6

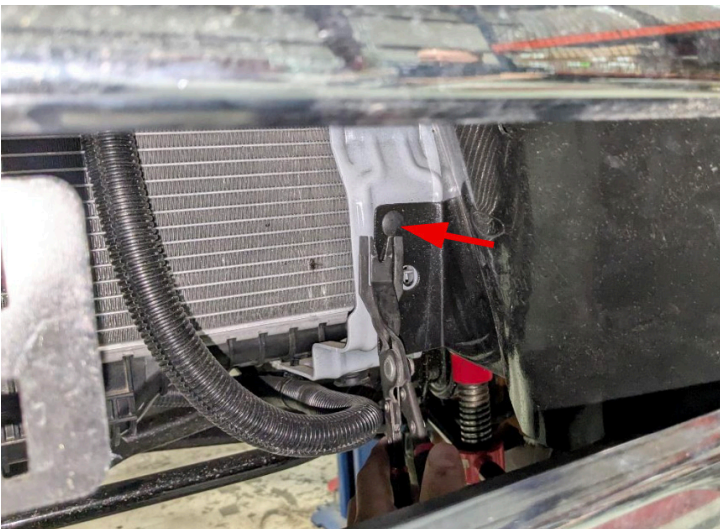


Figure 5



Figure 6

-
6. Using a 21mm socket wrench, remove the two (2) nuts from each frame horn to remove the bumper from the vehicle. Figure 7

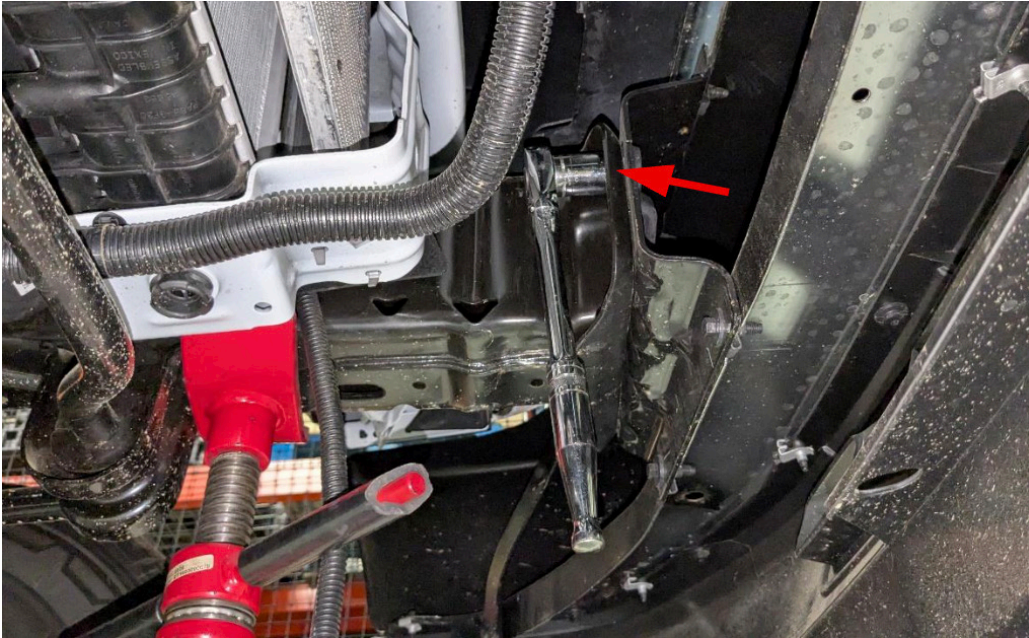


Figure 7

7. Using an 8mm socket wrench, remove the three (3) screws attaching the adaptive cruise control (ACC) sensor bracket to the inside of the bumper. Figure 8

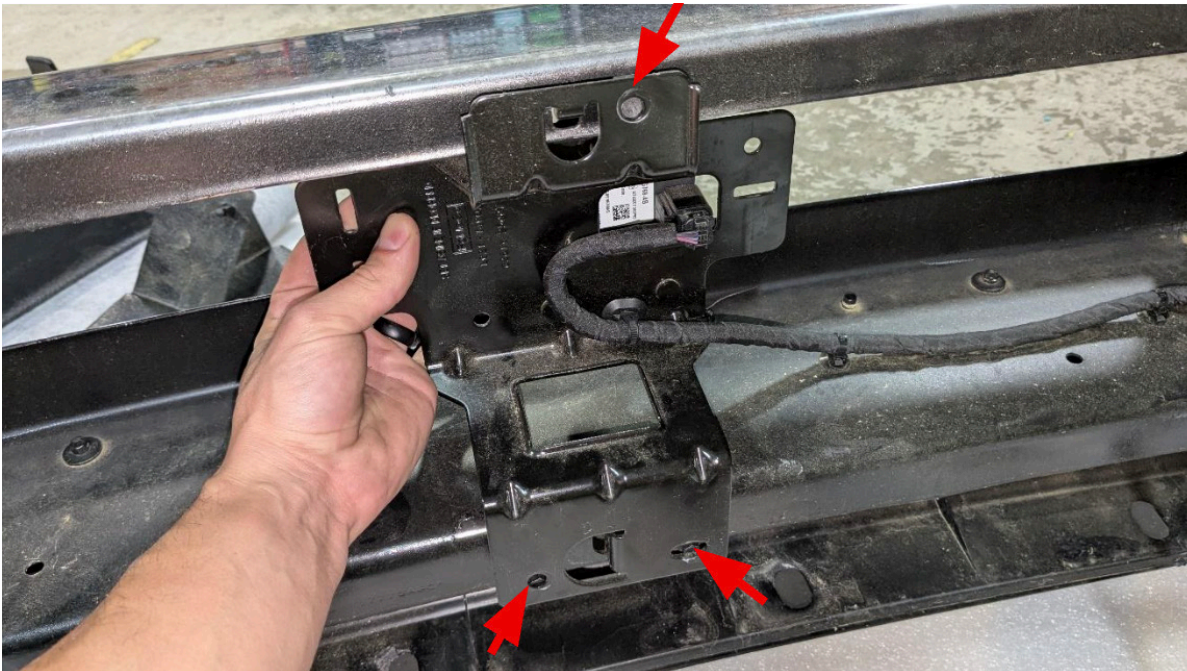


Figure 8

8. Using a panel pry tool, remove the two (2) push pins attaching the sensor wiring harness to the bumper. Figure 9

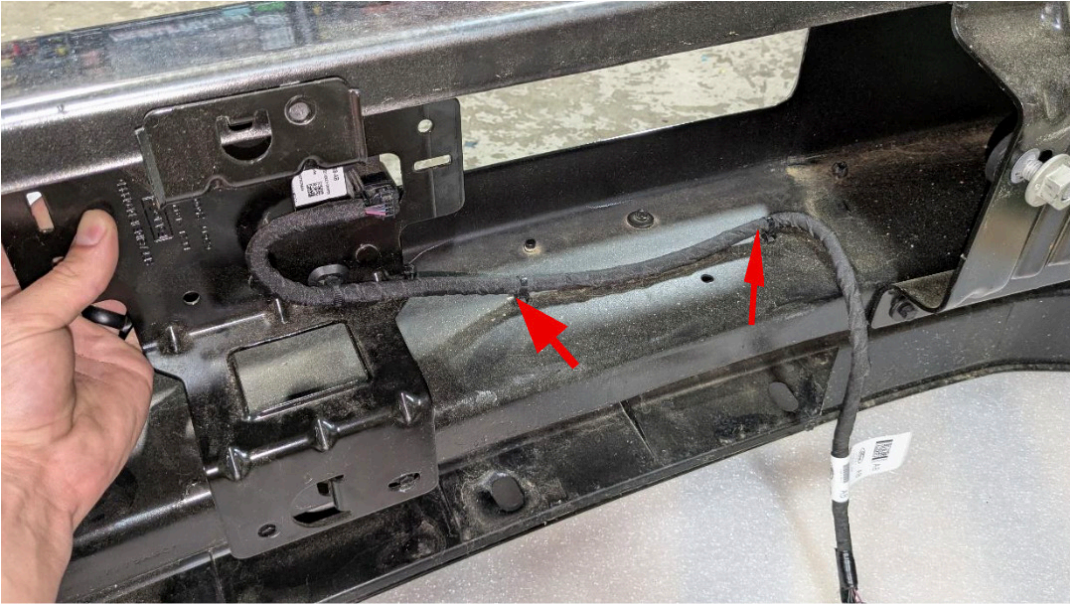


Figure 9

9. Using four (4) of the provided 1/2"-13 x 1.5" bolts, flat washers, lock washers, and nuts to install the driver's side mount (Part#: 23454) to the driver's side frame horn. Figure 10

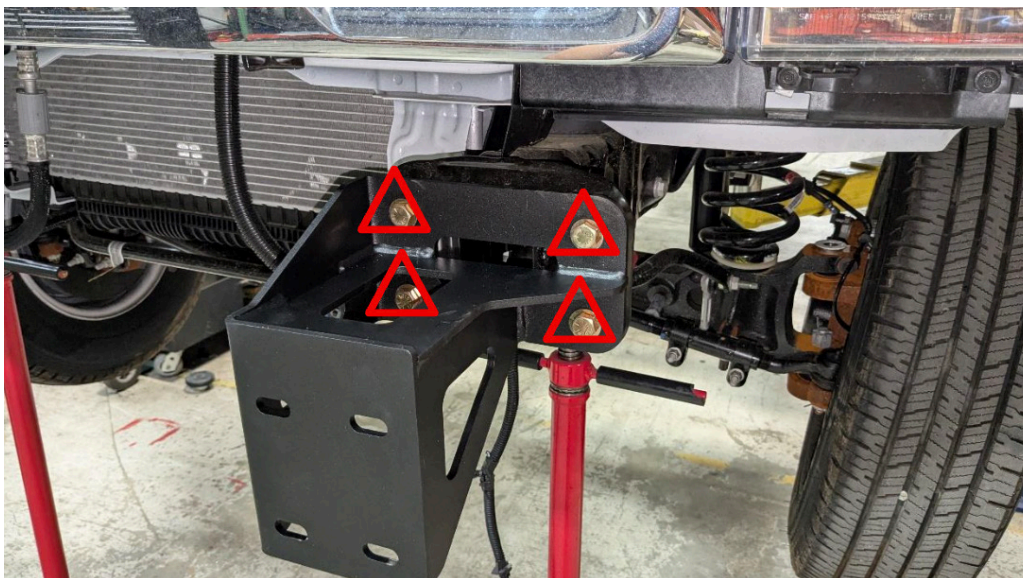


Figure 10

10. Using four (4) of the provided 1/2"-13 x 1.5" bolts, flat washers, lock washers, and nuts to install the passenger's side mount (Part#: 23455) to the passenger's side frame horn.

11. Using a 3/4" combination wrench and socket wrench, tighten the previously installed 1/2" hardware.
Figure 11

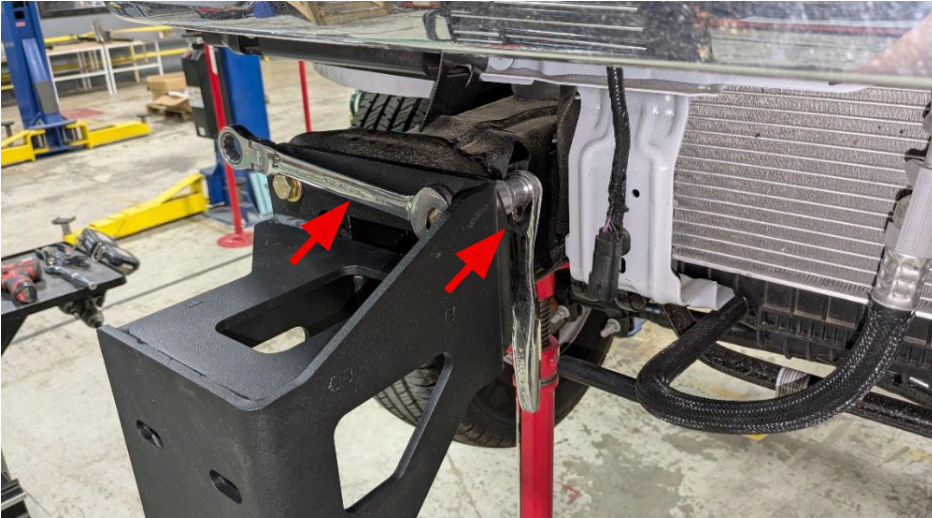


Figure 11

12. If equipped, zip tie the engine block heater harness to the bracket where it can be easily accessed.
Figure 12

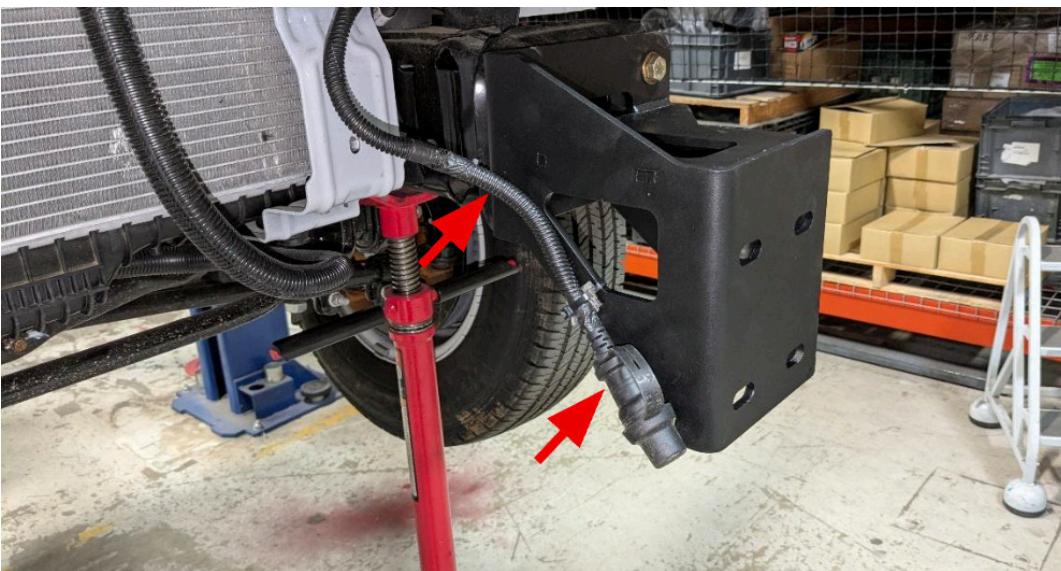


Figure 12

13. With assistance, hold the bumper shell (Part#: 23453) up to the vehicle and install it using eight (8) of the provided 1/2"-13 x 1.5" hex head cap screws, flat washers, lock washers and nuts. Figure 13

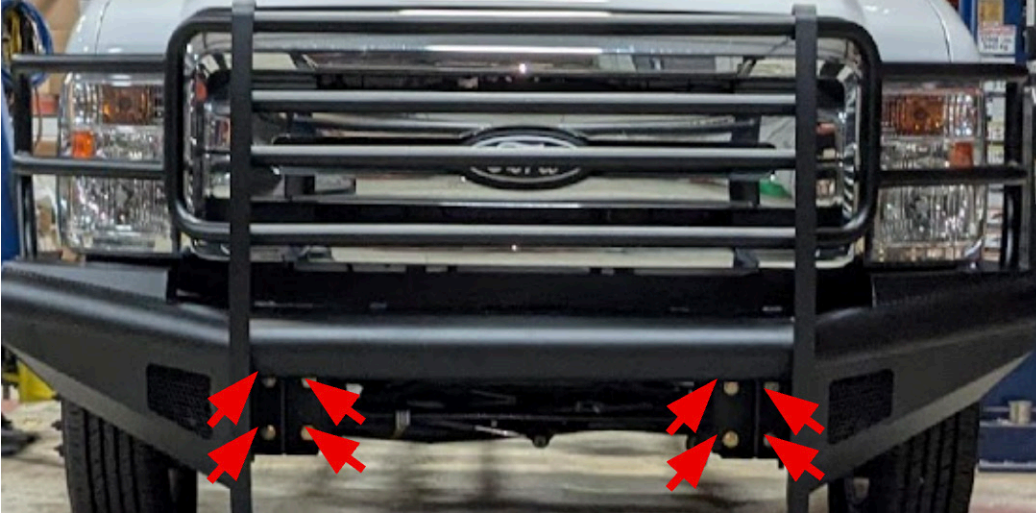


Figure 13

14. Align the bumper shell with the vehicle then use a 3/4" combination and socket wrench to tighten the previously installed 1/2" hardware.

15. Install ACC sensor and mounting bracket onto the lower guard (Part#: 23458) using three (3) of the provided 1/4"-20 x 1" hex head cap screws, flat washers, lock washers and nuts. Tighten the previously installed hardware using a 7/16" combination wrench and socket wrench. Figure 14

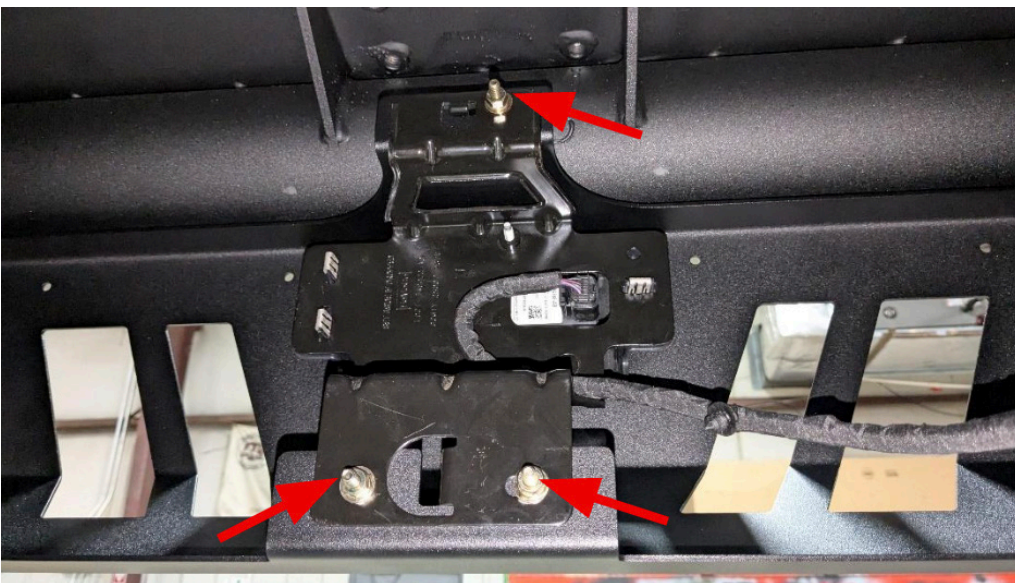


Figure 14

-
16. Install the lower guard (Part#: 23458) using six (6) of the provided 1/2"x1" hex head cap screws, flat washers and nuts (20260-HW). Figure 15-16



Figure 15

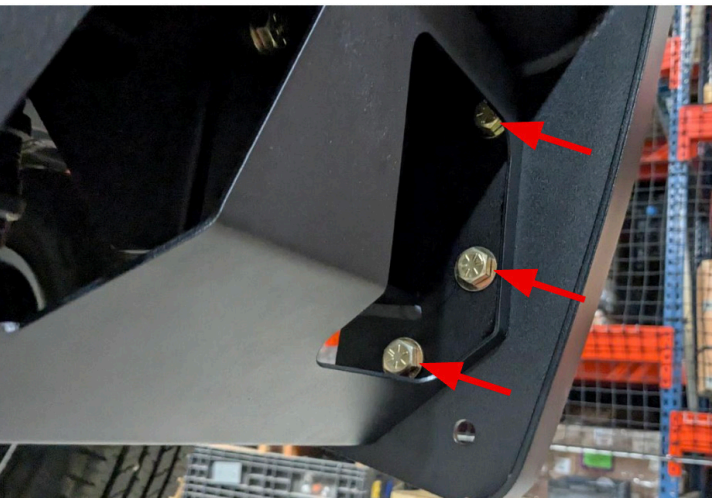


Figure 16

17. Reconnect the sensor wiring harness to the vehicle. Figure 17

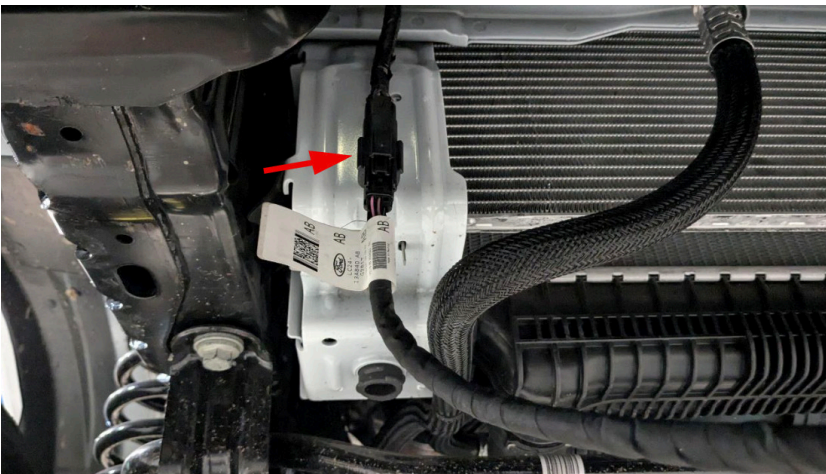


Figure 17

INSTALLATION COMPLETE

CONTACT INFORMATION

**FAB FOURS INC.
2213 INDUSTRIAL PARK ROAD
LANCASTER, SC 29720**

**PHONE: (866) 385-1905
FAX: 970-385-1914
EMAIL: SUPPORT@FABFOURS.COM
FABFOURS.COM**



**“IF YOU’RE LOOKING FOR MORE OF THE SAME,
THEN YOU’VE COME TO THE WRONG PLACE.”**

- GREG HIGGS

